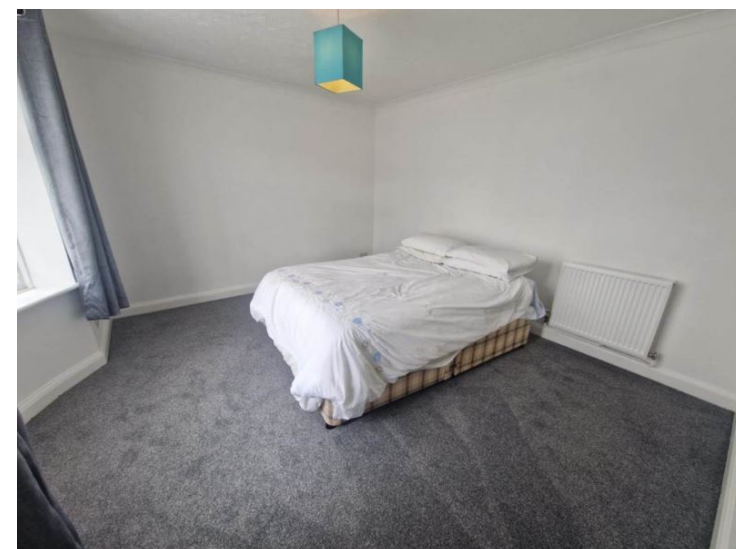




Lower Gower Road
SG8 5EA

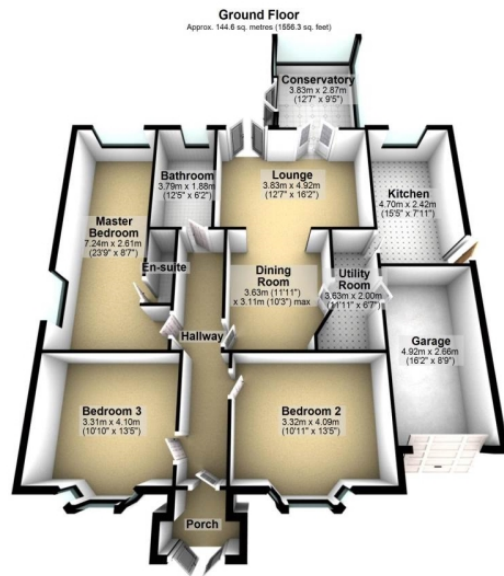
£1,700 Monthly

abode



01763259888

Abode are pleased to offer this spacious, three-bedroom, detached bungalow in Royston, Hertfordshire, positioned a short walk to the mainline train station. The property comprises of a kitchen, utility, dining room, conservatory, three double bedrooms, ensuite to master and a family bathroom. The property also benefits an idyllic large garden, driveway with off road parking for two cars and an attached garage. Available from 2nd of September 2025, viewings highly recommended and by prior appointment only.



Total area: approx. 144.6 sq. metres (1556.3 sq. feet)



Energy Efficiency Rating		
	Current	Potential
Very energy efficient - lower running costs		
(92-100) A		
(81-91) B		
(69-80) C		
(55-68) D		
(39-54) E		
(21-38) F		
(1-20) G		
Not energy efficient - higher running costs		
England & Wales	EU Directive 2002/91/EC	