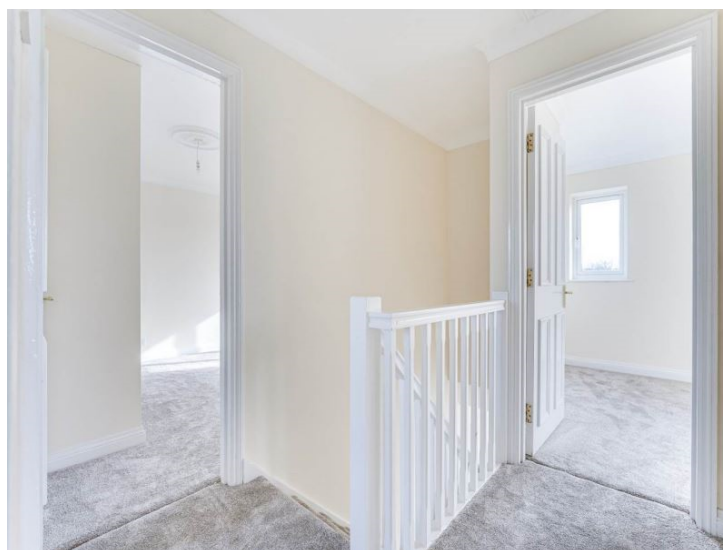




**Heydon Grange  
SG8 7NS**

**£2,400 Monthly**

**abode**



01763259888

# Heydon Grange, Heydon Grange Golf Club, SG8 7NS

£2,400 Monthly

Abode are delighted to offer this exclusive property on the popular Heydon Grange Golf Club. This semi detached 4 bedroom family home is one of only two properties on the golf course, it is accessed through a long tree lined driveway that meanders through the golf course. The property is freshly decorated throughout, with new double glazed windows, carpets and flooring. Downstairs comprises of a large picket fenced garden, off road parking, a large dual aspect lounge, newly refurbished kitchen, WC and dining room. Upstairs we have four bedrooms, ensuite to the master bedroom, and family bathroom. Situated at the centre of the golf course and a 150 meter walk to the 750 year old club house, the property is a golfers dream.

Dining Room (Ground Floor) 3.53m ( 11'7") x 3.50m ( 11'6")

Entrance Hall (Ground Floor) 1.97m ( 6'6") x 5.63m ( 18'6")

Kitchen (Ground Floor) 3.55m ( 11'8") x 3.57m ( 11'9")

Lounge (Ground Floor) 3.94m ( 13'0") x 7.22m ( 23'9")

Bathroom (First Floor) 2.07m ( 6'10") x 2.39m ( 7'11")

Bedroom 2 (First Floor) 2.72m ( 9'0") x 4.35m ( 14'4")

Bedroom 3 (First Floor) 2.10m ( 6'11") x 3.36m ( 11'1")

Bedroom 4 (First Floor) 2.10m ( 6'11") x 3.27m ( 10'9")

Ensuite (First Floor) 1.96m ( 6'6") x 2.24m ( 7'5")

Master Bedroom (First Floor) 3.49m ( 11'6") x 5.10m ( 16'9")

Disclaimer

[[FloorPlanPhotos.Photo.StorageKey]:GetDBImage()]



Energy Efficiency Rating		
	Current	Potential
<i>Very energy efficient - lower running costs</i>		
(92-100) <b>A</b>		
(81-91) <b>B</b>		
(69-80) <b>C</b>		
(55-68) <b>D</b>		
(39-54) <b>E</b>		
(21-38) <b>F</b>		
(1-20) <b>G</b>		
<i>Not energy efficient - higher running costs</i>		
<b>England &amp; Wales</b>	EU Directive 2002/91/EC	