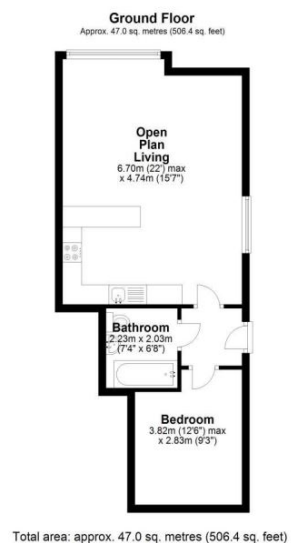
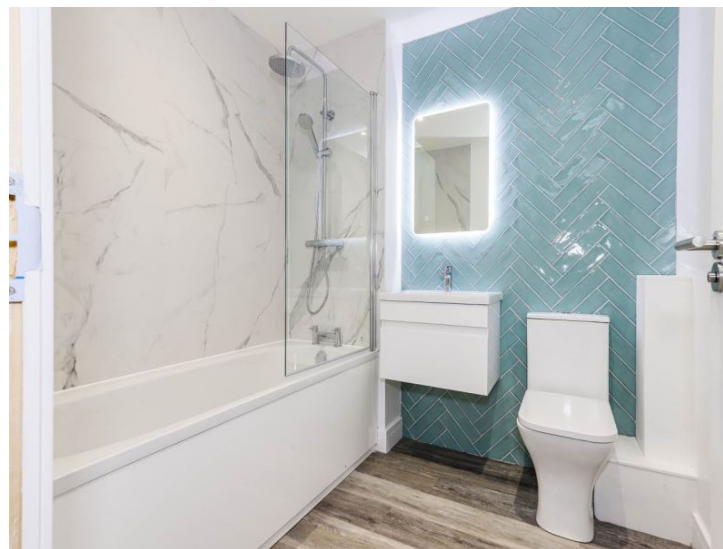
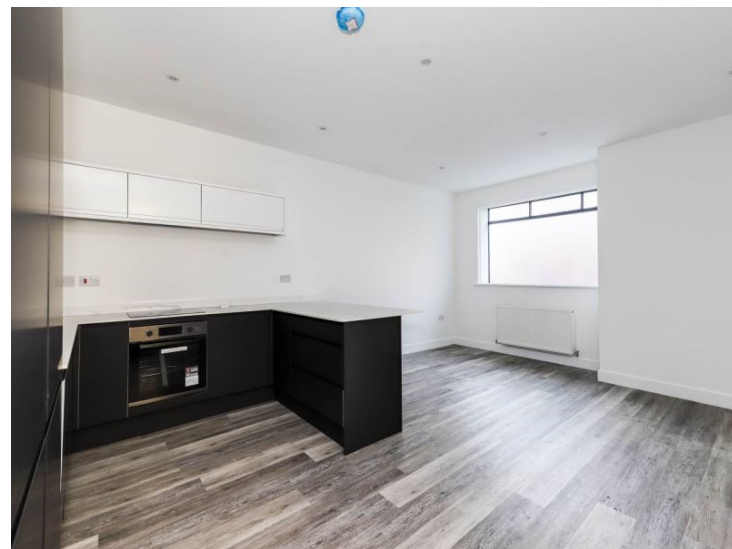




Kneesworth Street
SG8 5AA

£1,050 Monthly





01763259888

Abode are delighted to offer this newly renovated one Bedroom ground floor apartment in the heart of the historic market town of Royston. Renovated to an excellent standard with designer Kitchens and Bathrooms these apartments are ideal for commuters or locals who wish to enjoy Royston's amenities and the surrounding countryside. Comprising of an open plan Kitchen, living and dining area, modern bathroom suite, entrance hallway, and one double bedroom. The property is a 7 minute walk to Royston Train Station with mainline trains to Kings Cross in 38 minutes and Cambridge in 13 minutes. The property further benefits from secure bike storage, available to rent immediately, viewing is highly recommended and available upon request.

Bathroom (Ground Floor) 2.23m (7'4") x 2.03m (6'8")

A three piece bathroom suite, comprising of bath with shower above, WC, and basin with vanity beneath. A backlit mirror and heated towel rail complete this chic bathroom.

Bedroom (Ground Floor) 3.82m (12'7") x 2.83m (9'4")

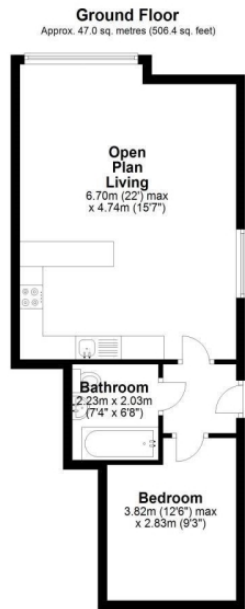
With window to rear aspect.

Entrance Hall (Ground Floor)

Private entrance with period oak front door.

Kitchen / Living Area (Ground Floor) 4.74m (15'7") x 6.70m (22'0")

Open plan kitchen, complete with induction hobs, electric oven, washer/drier, dishwasher and fridge freezer. frosted double skinned window to front aspect.



Total area: approx. 47.0 sq. metres (506.4 sq. feet)



Energy Efficiency Rating		
	Current	Potential
<i>Very energy efficient - lower running costs</i>		
(92- A		
(81-91) B		
(69-80) C	77	77
(55-68) D		
(39-54) E		
(21-38) F		
(1-20) G		
<i>Not energy efficient - higher running costs</i>		
England & Wales	EU Directive 2002/91/EC	