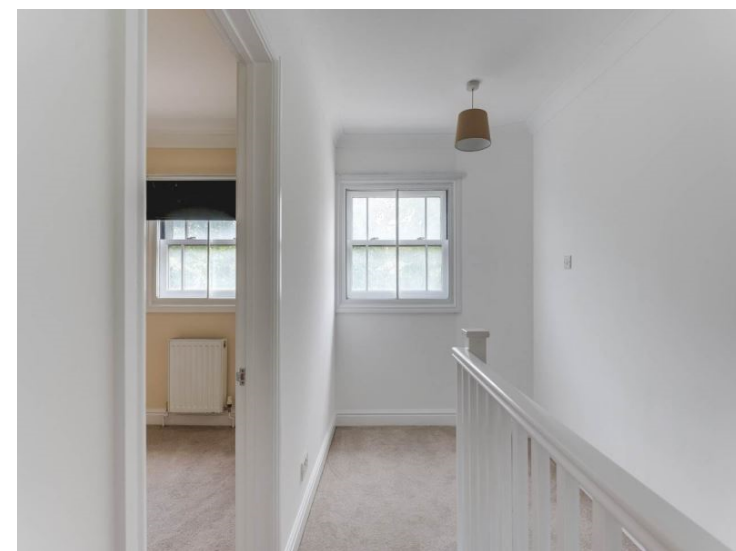




Priory Lane  
SG8 9DU

£1,350 Monthly

abode



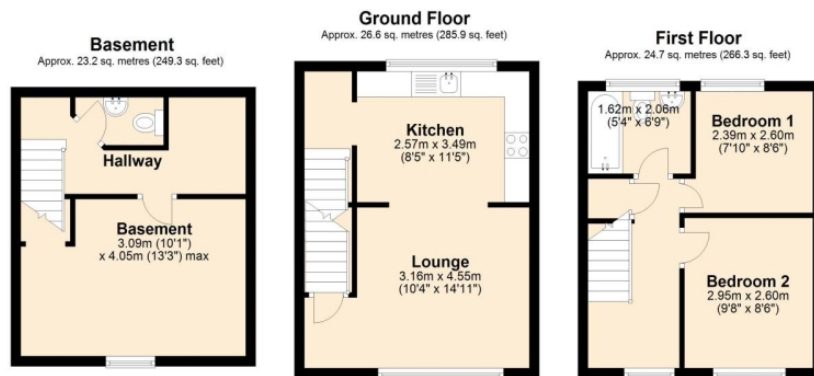
01763259888

Abode are happy to offer this two bedroom house in the centre of the Historic Market town of Royston, Hertfordshire. The property consists of a kitchen including washing machine, fridge freezer, gas hobs and electric oven, a nice size lounge, with stairs leading to basement which includes a WC and second reception room which would make an ideal home office or exercise space. Upstairs we have one double and one large single bedroom, and a family bathroom with three piece bathroom suite.

About Royston

Royston is a charming market town situated in the heart of Hertfordshire, a county known for its natural beauty, rich history, and vibrant cultural scene. With a population of around 16,000, Royston is a small but bustling community that offers the perfect blend of countryside tranquility and urban convenience. One of the most striking features of Royston is its beautiful architecture. The town's historic buildings are a testament to its rich heritage, dating back to the Roman





Total area: approx. 74.5 sq. metres (801.5 sq. feet)



Energy Efficiency Rating		
	Current	Potential
Very energy efficient - lower running costs		
(92-100) <b>A</b>		
(81-91) <b>B</b>		
(69-80) <b>C</b>		
(55-68) <b>D</b>		
(39-54) <b>E</b>		
(21-38) <b>F</b>		
(1-20) <b>G</b>		
Not energy efficient - higher running costs		
England & Wales		EU Directive 2002/91/EC 