



**Malthouse Place
SG8 5GA**

£1,150 Monthly

abode

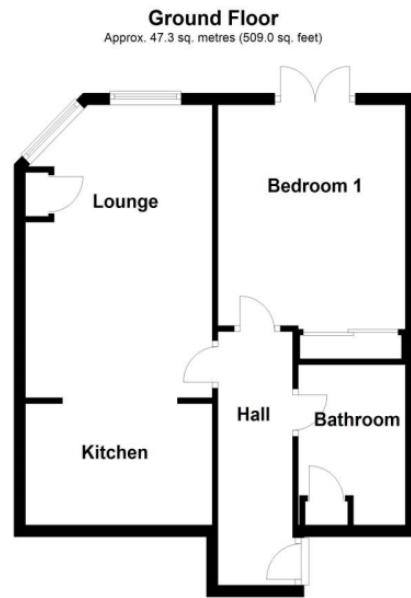


01763259888

Malthouse Place, Green Drift, SG8 5GA

£1,150 Monthly

Abode are delighted to offer this generously sized one bedroom, ground floor apartment for rent in the popular Malthouse Place block. The property is well located, a short walk to Royston Train Station with mainline trains into Cambridge and Kings Cross. The property consists of large lounge with open plan kitchen, three piece bathroom suite, and double bedroom with french doors leading to private patio area. The property is available from the 23rd of June 2026r. No pets. EPC rating C. Council tax B. Electric to be payable quarterly. Viewings by appointment only.



Total area: approx. 47.3 sq. metres (509.0 sq. feet)



Energy Efficiency Rating		
	Current	Potential
<i>Very energy efficient - lower running costs</i>		
(92- A		
(81-91) B		
(69-80) C	78	80
(55-68) D		
(39-54) E		
(21-38) F		
(1-20) G		
<i>Not energy efficient - higher running costs</i>		
England & Wales	EU Directive 2002/91/EC	