



Lime Grove  
SG8 7DJ

£750 Monthly

abode



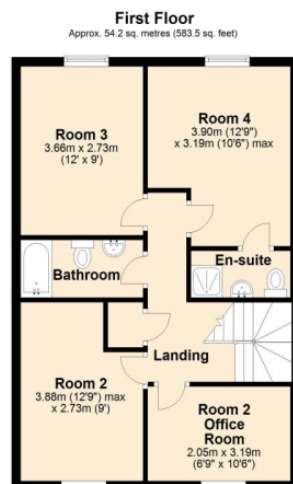
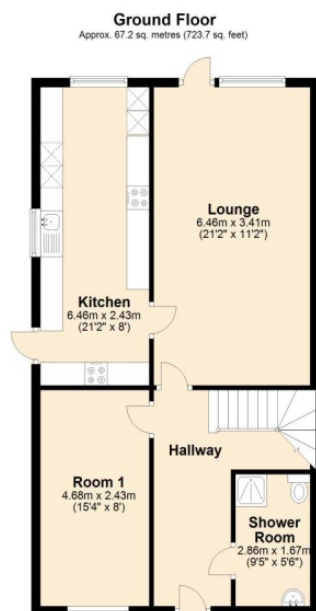
01763259888

Abode are delighted to offer this furnished, double room on the ground floor of a newly renovated, four bedroom, semi-detached shared house, situated near to Royston Leisure Centre and Train Station. With direct trains to London and Cambridge, the location is ideal for commuters. The property has been renovated to high standard with all of the mod cons, comprising a large communal lounge, a communal lounge/diner, four bedrooms, a communal shower room and a communal bathroom. The property also benefits from a newly landscaped, fully enclosed, large rear garden. This home has been renovated to the highest standards to create a beautiful HMO.

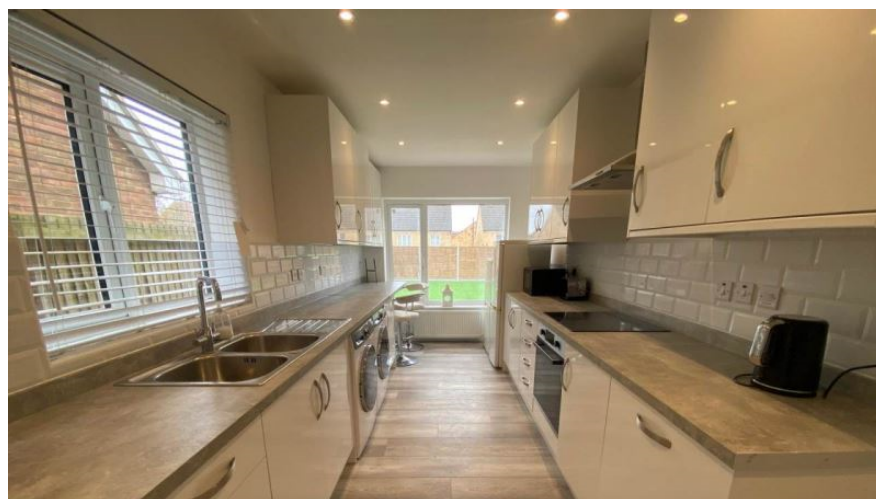
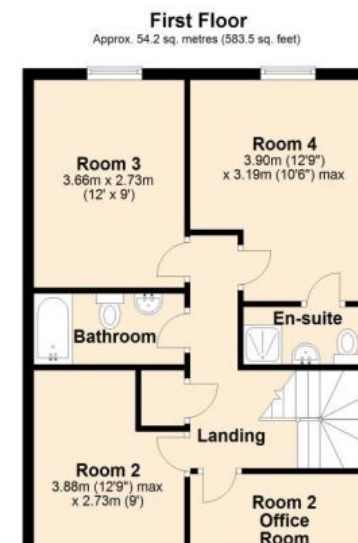
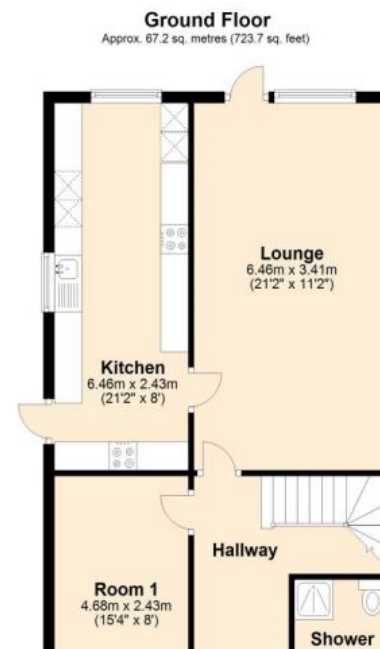
Council tax, electric, gas and water bills are included.

The room is for single occupancy only. Call us on: 01763 259888 to book a viewing.





Total area: approx. 121.4 sq. metres (1307.2 sq. feet)



Energy Efficiency Rating		
	Current	Potential
Very energy efficient - lower running costs		
(92-100) <b>A</b>		
(81-91) <b>B</b>		
(69-80) <b>C</b>		
(55-68) <b>D</b>		
(39-54) <b>E</b>		
(21-38) <b>F</b>		
(1-20) <b>G</b>		
Not energy efficient - higher running costs		
<b>England &amp; Wales</b>	EU Directive 2002/91/EC	