

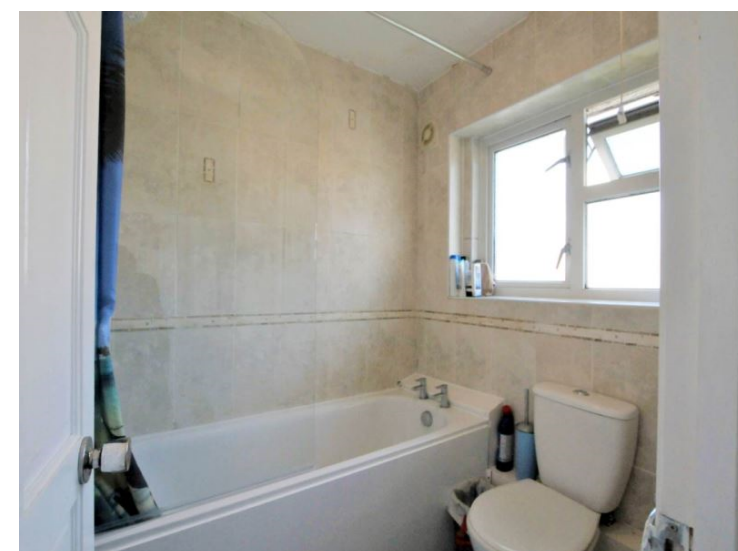


Icknield Walk  
SG8 7JX

£650 Monthly

abode





01763259888

This furnished, double room is on the ground floor of this five bedroom, semi-detached house, situated near to Royston Town centre. The property comprises; a kitchen/diner, five bedrooms, a cloakroom and a bathroom. The property also benefits from a large fully enclosed rear garden. Located a short walk from Royston Town centre and train station this property would be ideal for locals and commuters alike. All bills at the property are included with the exception of Wifi which is arranged by the tenants and paid directly. Contact Abode to arrange viewings by appointment only.

[[FloorPlanPhotos.Photo.StorageKey]:GetDBImage()]



Energy Efficiency Rating		
	Current	Potential
Very energy efficient - lower running costs		
(92-100) A		
(81-91) B		
(69-80) C		
(55-68) D		
(39-54) E		
(21-38) F		
(1-20) G		
Not energy efficient - higher running costs		
England & Wales	EU Directive 2002/91/EC	