



Jepps Shop

SG8 9AP

abode

01763259888

This is an opportunity to purchase a shop unit in the Middle of Royston Town centre. This property benefits having a large shop front, wood flooring throughout, WC and utility room. This property is currently tenanted. The current business is unaffected by the sale. For more information please call 01763 259888..

Retail Space: 5.77m (19'0") x 6.51m (21'5")

Windows to the front and side, door to front and side, wood flooring.

426.7 sq.ft 39.6 sq. m

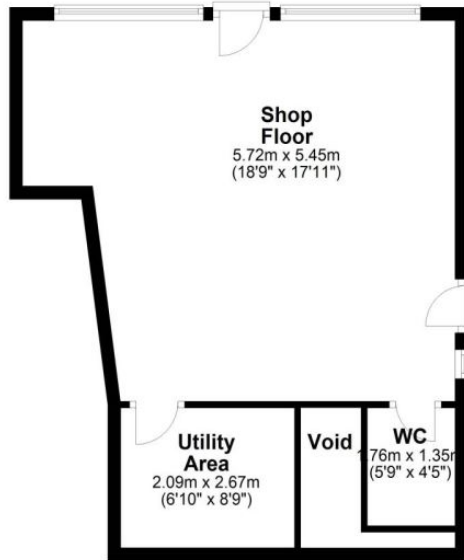
WC: 1.07m (3'7") x 1.35m (4'6")

Low level WC, sink, tiled floor.

Utility Room: 2.76m (9'1") x 1.84m (6'1")

Wood Flooring & Sink unit, partially tiled walls.

Ground Floor



Energy Efficiency Rating		
	Current	Potential
<i>Very energy efficient - lower running costs</i>		
(92-100) A		
(81-91) B		
(69-80) C		
(55-68) D		
(39-54) E		
(21-38) F		
(1-20) G		
<i>Not energy efficient - higher running costs</i>		
England & Wales	EU Directive 2002/91/EC	