



To Let: £720 Monthly Per Person

**Forman Street, , Derby,
studio-two-corner-house, DE1 1JQ**

- Furnished
- Washer Dryer
- Modern layout
- City Centre Location
- Open plan Living
- Self-contained Studio
- Great location
- Fridge freezer
- Student Property
- Available July 2025

About The Property

STUDENT ACCOMMODATION 2025/26 INCLUSIVE OF UTILITIES.
Self-contained studio apartment completed Dec 2021. Kitchen, lounge, bathroom, bedroom and study space. Perfect for student study lifestyle. Available from 15th July 2025 Rent £720.00 Deposit £720.00 Managed by Blue I Properties

Room Details

Bathroom

White three piece suite with shower cubicle, toilet and hand wash basin.

Bedroom

Furnished with a double bed, chest of drawers, freestanding wardrobe and bedside table.

Kitchen

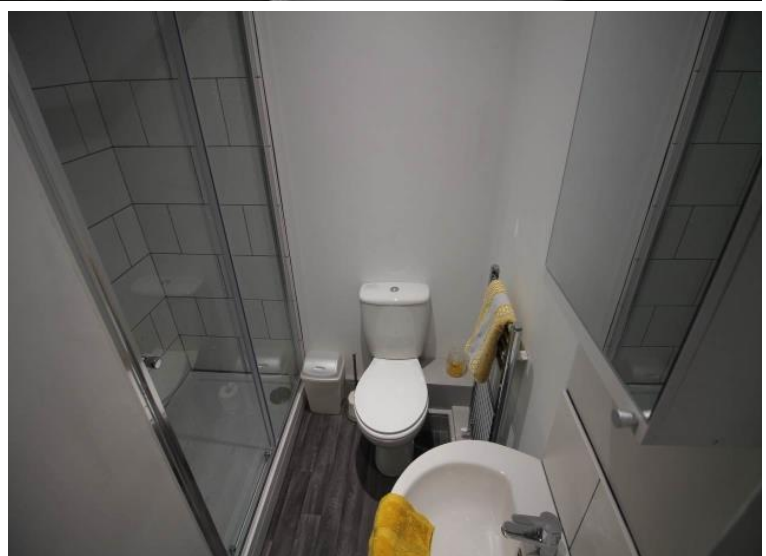
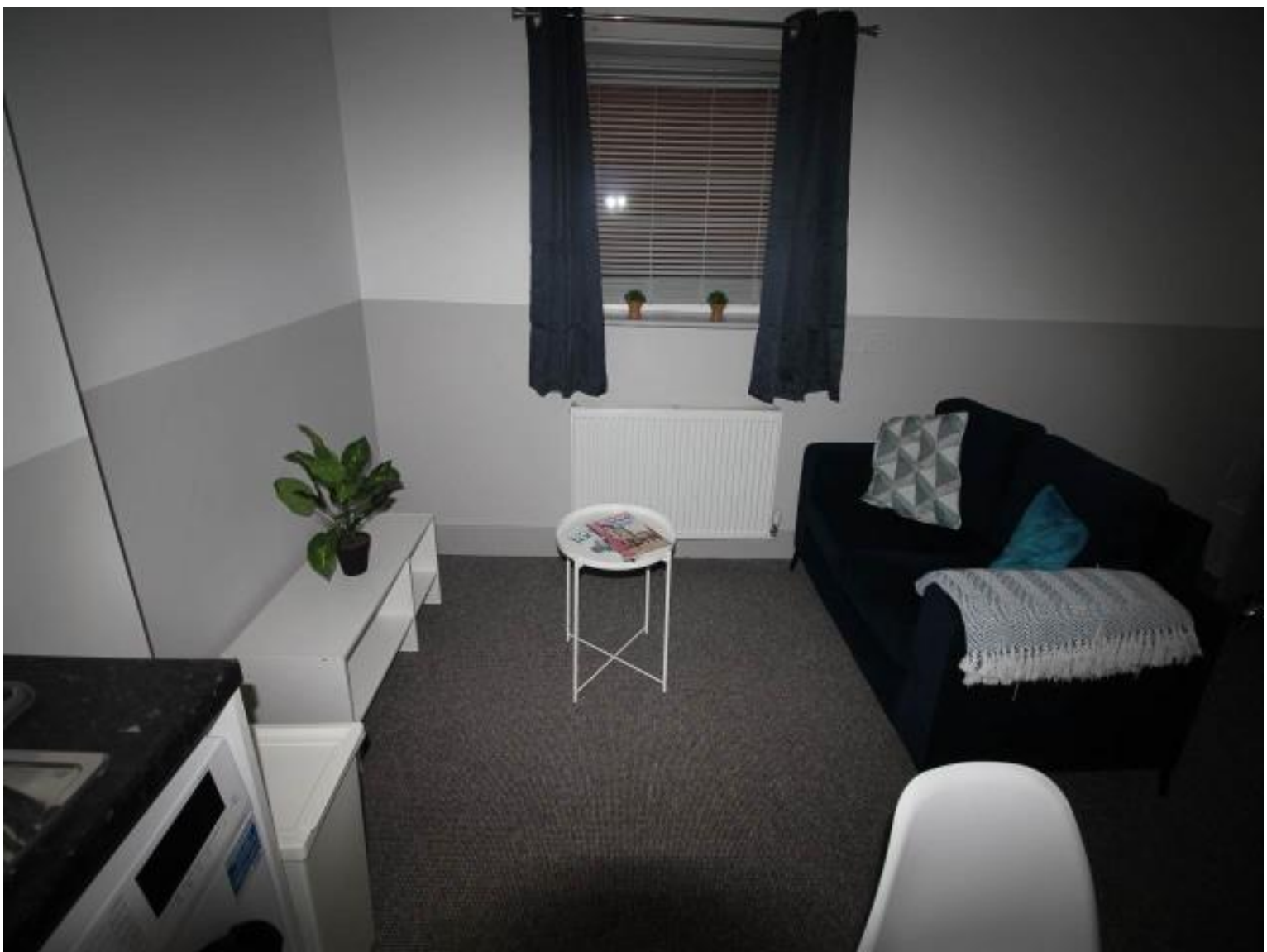
Wall, base and drawer units with full size single built in oven, inset ceramic hob, extractor hood, washing machine, fridge freezer, sink & drainer.

Lounge

Furnished with a two seat sofa and a television stand

Study Area

Desk with chair.





Energy Efficiency Rating

| | Current | Potential |
|---|-------------------------|-----------|
| Very energy efficient - lower running costs | | |
| (92-100) A | | |
| (81-91) B | | |
| (69-80) C | | |
| (55-68) D | | |
| (39-54) E | | |
| (21-38) F | | |
| (1-20) G | | |
| Not energy efficient - higher running costs | | |
| England & Wales | EU Directive 2002/91/EC | |

Environmental Impact (CO₂) Rating

| | Current | Potential |
|---|-------------------------|-----------|
| Very environmentally friendly - lower CO ₂ emissions | | |
| (92-100) A | | |
| (81-91) B | | |
| (69-80) C | | |
| (55-68) D | | |
| (39-54) E | | |
| (21-38) F | | |
| (1-20) G | | |
| Not environmentally friendly - higher CO ₂ emissions | | |
| England & Wales | EU Directive 2002/91/EC | |

FEE'S:-

Student, Professional & Families

- No administration fee's
- No setup fee's
- No referencing fee's
- No guarantor fee's
- One months rent as a deposit for students
- 5 weeks rent as a deposit for professionals & families
- One months rent in advance

Please note we can not guarantee the complete accuracy of all the information in our marketing material. There maybe some errors, so please check the paperwork and the tenancy agreement carefully.