



**To Let: £545 Monthly Per Person**

**Peet Street, , Derby, DE22 3RG**

- Furnished
- Two double bedrooms
- Modern layout
- Ground Floor Apartment
- Off Road Parking
- Open plan Living
- Spacious property

## About The Property

Ground floor TWO bedroom student apartment, furnished to a high standard and decorated with a modern vision in mind. Open plan living - dining - kitchen space with modern fittings and appliances. Off road parking. Available 9th February 2026  
Rent £545.00 per person per calendar month based on two people sharing including electric, water & internet. Deposit £545.00 per person

## Room Details

### Bathroom

Modern decoration with neutral tiled wet area walls, fitted with a white suite including toilet, hand wash basin and shower cubicle, heated towel rail, mirrored bathroom cabinet.

### Bedroom One

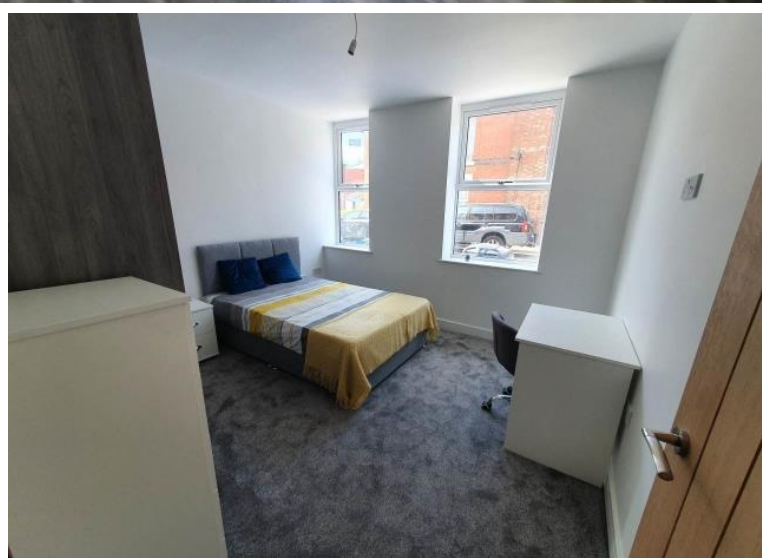
This is a large double bedroom with a double bed, built in wardrobe, chest of drawers, bedside table, desk and study chair. The room will be furnished with modern furniture and decorated in neutral colours.

### Bedroom Two

Spacious double bedroom which will be decorated in neutral colours and furnished with modern furniture. There will be a double bed, fitted wardrobe, bedside table, chest of drawers, desk and study chair.

### Lounge - Kitchen - Diner

Open plan modern spacious multi purpose area, the kitchen is laid out around one corner with a dining table in the centre and the seating area on the other corner. There will be an electric single oven, ceramic hob, sink and drainer, fridge freezer and washing machine in the kitchen area.







## Energy Efficiency Rating

	Current	Potential
Very energy efficient - lower running costs		
(92-100) <b>A</b>		
(81-91) <b>B</b>		
(69-80) <b>C</b>		
(55-68) <b>D</b>		
(39-54) <b>E</b>		
(21-38) <b>F</b>		
(1-20) <b>G</b>		
Not energy efficient - higher running costs		
<b>England &amp; Wales</b>	EU Directive 2002/91/EC	<b>74</b>

## Environmental Impact (CO<sub>2</sub>) Rating

	Current	Potential
Very environmentally friendly - lower CO <sub>2</sub> emissions		
(92-100) <b>A</b>		
(81-91) <b>B</b>		
(69-80) <b>C</b>		
(55-68) <b>D</b>		
(39-54) <b>E</b>		
(21-38) <b>F</b>		
(1-20) <b>G</b>		
Not environmentally friendly - higher CO <sub>2</sub> emissions		
<b>England &amp; Wales</b>	EU Directive 2002/91/EC	

## FEE'S:-

Student, Professional & Families

- No administration fee's
- No setup fee's
- No referencing fee's
- No guarantor fee's
- One months rent as a deposit for students
- 5 weeks rent as a deposit for professionals & families
- One months rent in advance

Please note we can not guarantee the complete accuracy of all the information in our marketing material. There maybe some errors, so please check the paperwork and the tenancy agreement carefully.