



St James Street , Shaftesbury, Dorset, SP7 8HF
£850 pcm

- Unfurnished
- EPC RATING "C"
- Characterful stone cottage
- Conservatory
- Courtyard Garden
- Brilliantly located
- Woodburner
-

Boatwrights are delighted to bring to the lettings market this characterful terraced Cottage located within walking distance of Shaftesbury Town Centre.

This beautifully presented Cottage offers one large double bedroom with built in storage & double bed, a cosy sitting room with an inglenook fireplace and wood burner, modern kitchen with white goods included & a spacious family bathroom. There is also a large garden room to the rear of the property and an enclosed courtyard garden with a garden store.

On Road Parking Only

GCH

Council Tax : Band C

Managed by Boatwrights

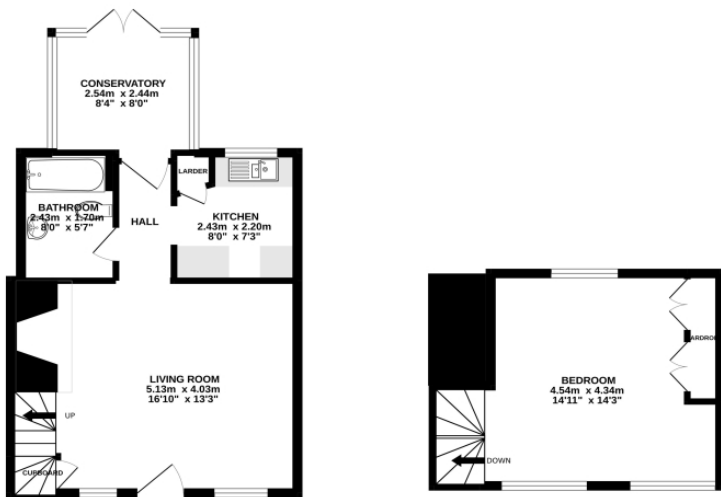
Grade II Listed

EPC Rating C - Valid 2030

Available Now

GROUND FLOOR

1ST FLOOR



[[MapPhotos.Photo.StorageKey]:GetDBImage()]

Whilst every attempt has been made to ensure the accuracy of the floorplan contained here, measurements of doors, windows, rooms and any other items are approximate and no responsibility is taken for any error, omission or mis-statement. This plan is for illustrative purposes only and should be used as such by any prospective purchaser. The services, systems and appliances shown have not been tested and no guarantee as to their operability or efficiency can be given. Made with Hozziego (2022)

Energy Efficiency Rating		Current	Potential
Very energy efficient - lower running costs			
(92-)	A		
(81-91)	B		
(69-80)	C		
(55-68)	D		
(39-54)	E		
(21-38)	F		
(1-20)	G		
Not energy efficient - higher running costs			
England & Wales		EU Directive 2002/91/EC	

Environmental Impact (CO ₂) Rating		Current	Potential
Very environmentally friendly - lower CO ₂ emissions			
(92-)	A		
(81-91)	B		
(69-80)	C		
(55-68)	D		
(39-54)	E		
(21-38)	F		
(1-20)	G		
Not environmentally friendly - higher CO ₂ emissions			
England & Wales		EU Directive 2002/91/EC	