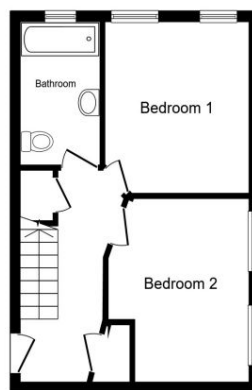


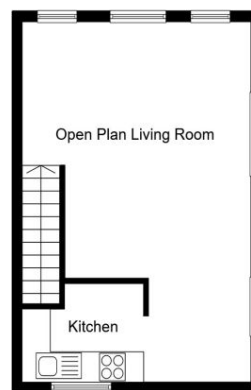


**Bradley & Co.**  
LETTING AGENTS

Office: 0117 329 1400  
[www.bradleyandco.agency](http://www.bradleyandco.agency)



**Ground Floor**  
Floor area 34.6 sq.m. (372 sq.ft.)



**First Floor**  
Floor area 34.6 sq.m. (373 sq.ft.)

Total floor area: 69.2 sq.m. (745 sq.ft.)

This floor plan is for illustrative purposes only. It is not drawn to scale. Any measurements, floor areas (including any total floor area), openings and orientations are approximate. No details are guaranteed, they cannot be relied upon for any purpose and do not form any part of any agreement. No liability is taken for any error, omission or misstatement. A party must rely upon its own inspection(s). Powered by www.propertybox.ie

**10 Highland Crescent**  
Clifton, Bristol, BS8 2YJ

**Rental £1,550 Monthly**  
**2 Bedroom Flat / Apartment**  
**Available 27 June 2025**

Clifton, 4a Waterloo St, Clifton, Bristol, , BS8 4BT  
Email: [info@bradleyandco.agency](mailto:info@bradleyandco.agency) | Tel: 0117 329 1400



\* Unfurnished

\*

\*

\*

Situation

Just opposite the Coach and Horses for a lovely drink in the evening this 2 bed duplex, located in Clifton on Highland Crescent is a stones throw from Whiteladies Road. The property comprises on the top level a large sitting room with laminate floors throughout with open plan kitchen area with white goods, 2 good sized double bedrooms on entrance level and a modern bathroom. Ideally suiting two professional sharers. Great access to Whiteladies Road and plethora of bars, eateries and local amenities. Offered on an unfurnished basis and gas central heating. Off street allocated under croft parking accessed on Worrall Road which is fob operated. EPC Band B Council Tax Band D. This property has all standard utilities provided to the property to include water, gas and electric. Rent does not include any bills. To secure the property we require a holding deposit £357. Available 27th June. \*works on windows and painting on the building to start on 22nd July where scaffold will go up.

Directions

Top of Whiteladies Road (last turning on left after Oxfam book shop)

Further Information

The deposit required is £1,788

Accommodation

All measurements are approximate.

