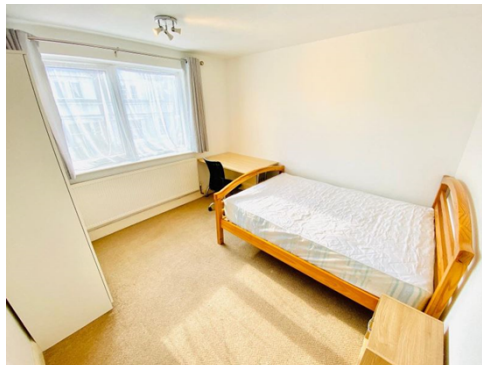




**butlin**  
PROPERTY SERVICES



Avenue Road, , Clarendon Park, Leicester, LE2  
3EA

£1,100 pcm

• **Furnished**



**\*\*STUDENT PROPERTY AVAILABLE FOR THE NEXT ACADEMIC YEAR\*\***

This apartment benefits from a spacious open plan living room/kitchen area, with all appliances included, dining area and sofa. Modern bathroom with bath and shower, separate w/c. Two double bedrooms both including, double bed with mattress, wardrobe, desk and desk chair. Plus a spare room that can be used as a study or for storage.

Hall & Home is a fully regulated member of ARLA Propertymark. As an ARLA Propertymark member, an agent must fulfil a number of corporate responsibilities, which in turn guarantees landlords and tenants will always receive excellent service and professional advice.

[[FloorPlanPhotos.Photo.StorageKey]:GetDBImage()]

[[MapPhotos.Photo.StorageKey]:GetDBImage()]

