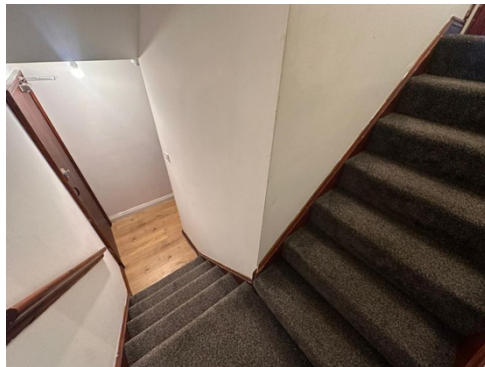




HALL & HOME
LETTINGS LIMITED



52 Gateway Street, , Leicester, LE2 7DP

£750 pcm

- Furnished
- Mezzanine Floor
- Duplex Apartment
- A Stones Throw to LRI & DMU
- Electric Heating
- Open Plan Style Living
- Spacious Living Room
- NO PARKING

A unique and generously proportioned furnished one-bedroom duplex apartment, featuring a mezzanine floor that maximises space and character. This bright home benefits from an abundance of natural light and high ceilings, creating an airy and inviting atmosphere.

The mezzanine double bedroom includes a fitted storage cupboard, and there is a separate bathroom with a shower over the bath. The modern kitchen is open-plan to the large living area and comes fully equipped with appliances, perfect for entertaining or relaxing.

Situated in a prime location, the property is just moments from DMU University and the Royal Infirmary Hospital, offering excellent convenience for students and professionals alike.

Available IMMEDIATELY and offered FULLY FURNISHED. Please note that there is NO parking included with this property.

Payments before the tenancy starts to Hall & Home, the Agent:

Holding Deposit: Equivalent to one weeks rent

Deposit: Equivalent to five weeks rent

[[FloorPlanPhotos.Photo.StorageKey]:GetDBImage()]

[[MapPhotos.Photo.StorageKey]:GetDBImage()]

