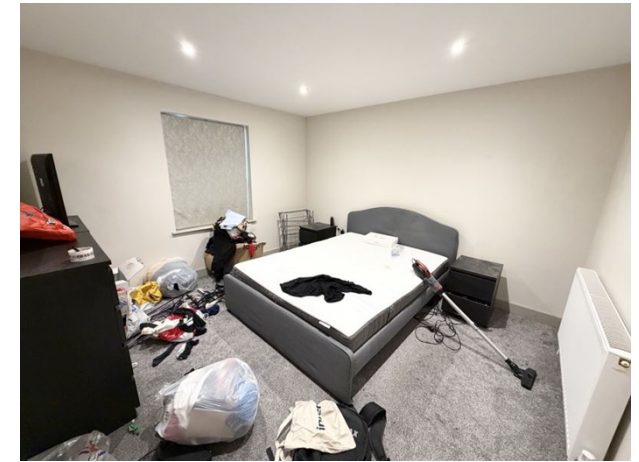




**Rushton Crescent , Bournemouth, Dorset, BH3 7AF**

**£950 pcm**





## The Property...

Churchfield are delighted to offer this modern, one bedroom, ground floor flat ideally located a short walk from Charminster and Bournemouth Town Centre.

- \* Spacious open plan living room/modern kitchen with appliances
- \* Fantastic sized double bedroom
- \* Modern contemporary bathroom with bath, separate shower unit, W/C, basin and heated towel rail
- \* Neutral decor throughout
- \* Double glazing
- \* High tech entry system
- \* Off road parking for ONE VEHICLE
- \* Unfurnished
- \* Available 02/03/26
- \* EPC rating C
- \* Council tax band B



## Accommodation...

80

80


80


## The Features...

- 80 Unfurnished
- 80 Modern
- 80 Newly Converted Flats
- 80 Ground Floor
- 80 Off Road Parking
- 80 One Bedroom
- 80 Unfurnished
- 80 Close to Charminster

[[FloorPlanPhotos.Photo.StorageKey]:GetDBImage()]

Directions...

Energy Efficiency Rating		
	Current	Potential
Very energy efficient - lower running costs		
(92- A		
(81-91) B		
(69-80) C		
(55-68) D		
(39-54) E		
(21-38) F		
(1-20) G		
Not energy efficient - higher running costs		
England & Wales		EU Directive 2002/91/EC 

Environmental Impact (CO <sub>2</sub> ) Rating		
	Current	Potential
Very environmentally friendly - lower CO <sub>2</sub> emissions		
(92- A		
(81-91) B		
(69-80) C		
(55-68) D		
(39-54) E		
(21-38) F		
(1-20) G		
Not environmentally friendly - higher CO <sub>2</sub> emissions		
England & Wales		EU Directive 2002/91/EC 

Contact Details  
Bournemouth - Partnership, 122 Charminster Road, Bournemouth, , BH8 8UT  
01202 779911

