



Melville Road , Winton, Bournemouth, BH9 2PL

£1,400 pcm

 **Churchfield**
SALES & LETTINGS
Churchfield.uk.com



The Property...

Churchfield are delighted to offer this modern, two bedroom house with garden located in Winton, just a short walk from Winton Highstreet and frequent transport links.

- * Private entrance onto a large modern kitchen with space for white goods
- * Living area with double doors onto a private courtyard
- * Upstairs there is two bedrooms and a modern bathroom

*	Available	14/08/26
*		Unfurnished
*	Council tax band:	A
*	EPC Banding:	C

Further benefits include gas central heating, double glazing and private garden. Please note parking is on road.

1. These particulars are provided for guidance



Accommodation...

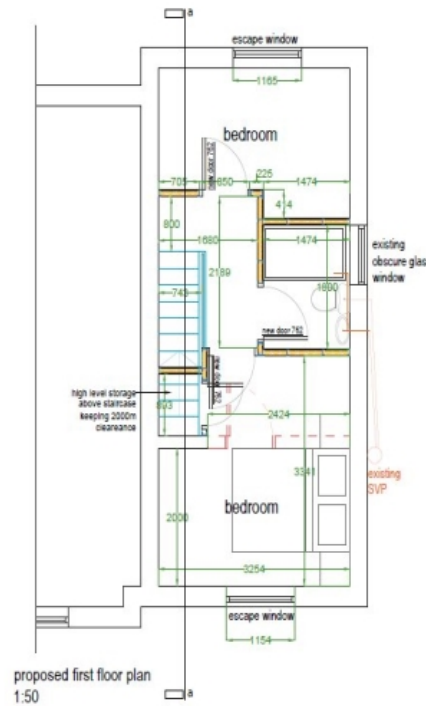
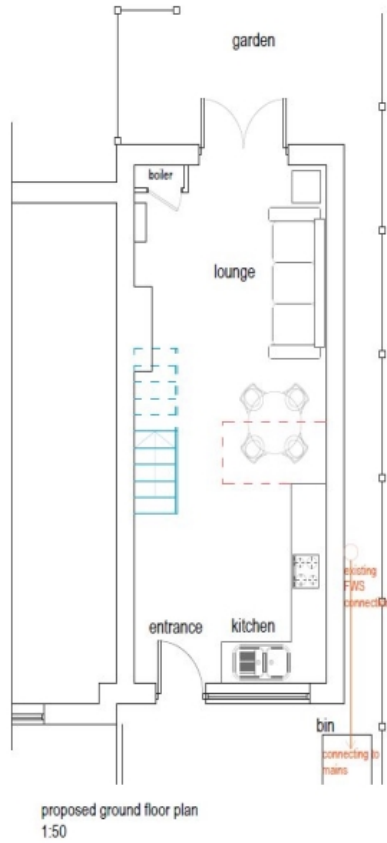
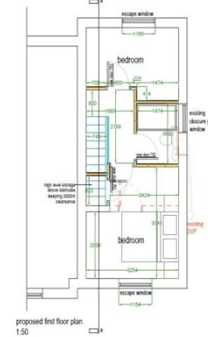
⌘

⌘

⌘

The Features...

- ⌘ Unfurnished
- ⌘ Located in Winton
- ⌘ Unfurnished
- ⌘ On Road Parking
- ⌘ Two Bedrooms
- ⌘ Modern
- ⌘ Semi-Detached House



Directions...

Energy Efficiency Rating		Current	Potential
Very energy efficient - lower running costs			
(92-)	A		
(81-91)	B		
(69-80)	C		
(55-68)	D		
(39-54)	E		
(21-38)	F		
(1-20)	G		
Not energy efficient - higher running costs			
England & Wales		EU Directive 2002/91/EC	

Environmental Impact (CO ₂) Rating		Current	Potential
Very environmentally friendly - lower CO ₂ emissions			
(92-)	A		
(81-91)	B		
(69-80)	C		
(55-68)	D		
(39-54)	E		
(21-38)	F		
(1-20)	G		
Not environmentally friendly - higher CO ₂ emissions			
England & Wales		EU Directive 2002/91/EC	

Contact Details

Bournemouth - Partnership, 122 Charminster Road, Bournemouth, , , BH8 8UT
01202 779911

