



Christchurch Road , Bournemouth, Dorset, BH1 3PA

£1,200 pcm





The Property...

Churchfield are delighted to offer this Spacious, Top Floor, Two Bedroom Flat located on Christchurch Road, Bournemouth.

- * Open plan living room/kitchen with appliances
- * Two good sized bedrooms with fitted wardrobes
- * One off road parking space
- * Gas Central Heating
- * Unfurnished
- * Bathroom suite with bath and overhead shower, W/C, heated towel rail and hand basin
- * EPC rating D
- * Council tax band D
- * Available from the 7th of August 2026

1. These particulars are provided for guidance only and do not constitute part of an offer or contract. All descriptions, statements, photographs, and plans are made in good faith.



Accommodation...

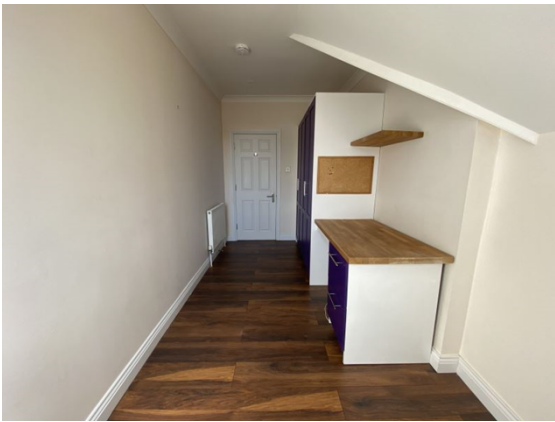
80

80

80

The Features...

- 80 Unfurnished
- 80 Two Bedrooms
- 80 Gas Central Heating
- 80 Top Floor
- 80 Allocated Parking
- 80 Unfurnished



[[FloorPlanPhotos.Photo.StorageKey]:GetDBImage()]

Directions...

Energy Efficiency Rating		Current	Potential
<i>Very energy efficient - lower running costs</i>			
(92-)	A		
(81-91)	B		
(69-80)	C		
(55-68)	D		
(39-54)	E		
(21-38)	F		
(1-20)	G		
<i>Not energy efficient - higher running costs</i>			
England & Wales		55	67
		EU Directive 2002/91/EC	

Environmental Impact (CO ₂) Rating		Current	Potential
<i>Very environmentally friendly - lower CO₂ emissions</i>			
(92-)	A		
(81-91)	B		
(69-80)	C		
(55-68)	D		
(39-54)	E		
(21-38)	F		
(1-20)	G		
<i>Not environmentally friendly - higher CO₂ emissions</i>			
England & Wales			
		EU Directive 2002/91/EC	

Contact Details

Bournemouth - Partnership, 122 Charminster Road, Bournemouth, , BH8 8UT
01202 779911

