

# MRKT

PROPERTY EXPERTS

The Marina, BH5 1BJ

**£1,300 Monthly**

**TO LET**



## Property Features:

- Furnished
- 1 Weeks rent payable on reservation
- Underground Parking
- Central Heating
- Furnished
- 1 Weeks rent payable on reservation

Description

From the lounge diner, main bedroom, and of course private terrace you have stunning sea views over the beautiful Boscombe pier.

Internally a very nice two double bedroom flat with a large separate kitchen, en suite shower room to the main bedroom and all finished to a nice standard with modern decor and flooring. The flat is offered furnished so perfectly suits professionals relocating who want to enjoy the views and position on offer.

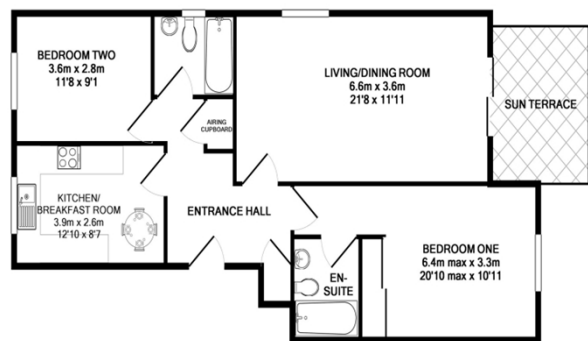
Students not permitted. Fully furnished with parking. Full references and affordability checks required.

Call us today to avoid disappointment.

Room Dimensions

- 
- 
- 
- 

Floor Plan



TOTAL APPROX. FLOOR AREA 79.0 SQ.M. (850 SQ.FT.)  
Whilst every attempt has been made to ensure the accuracy of the floor plan contained here, measurements of doors, windows, rooms and any other items are approximate and no responsibility is taken for any error, omission, or mis-statement. This plan is for illustrative purposes only and should be used as such by any prospective purchaser. The services, systems and appliances shown have not been tested and no guarantee as to their operability or efficiency can be given  
Made with Metronix iC018

EPC Certificate

Energy Efficiency Rating			Environmental Impact (CO <sub>2</sub> ) Rating		
	Current	Potential		Current	Potential
Very energy efficient - lower running costs			Very environmentally friendly - lower CO <sub>2</sub> emissions		
(92-100) A			(92-100) A		
(81-91) B			(81-91) B		
(69-80) C			(69-80) C		
(55-68) D			(55-68) D		
(39-54) E			(39-54) E		
(21-38) F			(21-38) F		
(1-20) G			(1-20) G		
Not energy efficient - higher running costs			Not environmentally friendly - higher CO <sub>2</sub> emissions		
England & Wales	EU Directive 2002/91/EC		England & Wales	EU Directive 2002/91/EC	