

# MRKT

## PROPERTY EXPERTS

Norwich Avenue West, BH2

**£1,200 Monthly**

**TO LET**



### Property Features:

- Unfurnished
- 1 Weeks rent payable on reservation
- Underground Parking
- Central Heating
- Unfurnished
- 1 Weeks rent payable on reservation

Description

This two bedroom ground floor apartment boasts its own separate equipped kitchen area, lounge with access to patio & garden area (which is officially communal), modern bathroom suite with bath & overhead shower.

Other benefits include, off road allocated parking for one vehicle at the rear of the building, gas central heating and upvc double glazed windows.

The property is situated in prime positioning close to Bournemouth Town Centre, Beaches & Westbourne.

The apartment is available on a LONG TERM and UNFURNISHED basis.

Please note the floorplan is not accurate however gives an idea of the flow of the flat.

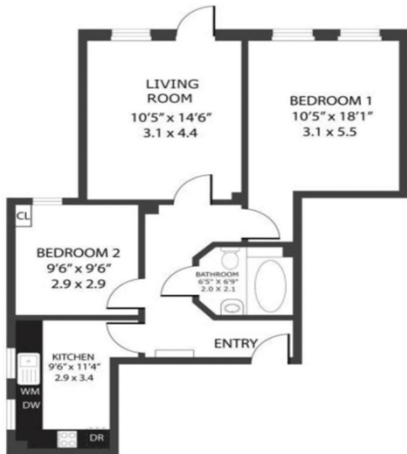
Viewing is highly recommended to appreciate this opportunity.

- Nearby -
- 0.7 Miles - Bournemouth Square
  - 0.7 Miles- Westbourne
  - 0.7 Miles -Durley Chine Beach

Room Dimensions

- 
- 
- 
- 

Floor Plan



18 Noriweh West Avenue , Bournemouth  
TOTAL APPROX. FLOOR AREA 653 SQ.FT 60 SQ.M  
Whilst every effort has been made to ensure the accuracy of the floor plan, confirmed items, measurements of doors, windows, stairs and any other items are approximate and no responsibility is taken for any error, omission, or misstatement. This plan is for illustrative purposes only and should be used as such for any prospective purchase.

EPC Certificate

Energy Efficiency Rating			Environmental Impact (CO <sub>2</sub> ) Rating		
	Current	Potential		Current	Potential
Very energy efficient - lower running costs			Very environmentally friendly - lower CO <sub>2</sub> emissions		
(92-100) A			(92-100) A		
(81-91) B			(81-91) B		
(69-80) C			(69-80) C		
(55-68) D			(55-68) D		
(39-54) E			(39-54) E		
(21-38) F			(21-38) F		
(1-20) G			(1-20) G		
Not energy efficient - higher running costs			Not environmentally friendly - higher CO <sub>2</sub> emissions		
England & Wales	EU Directive 2002/91/EC		England & Wales	EU Directive 2002/91/EC	