

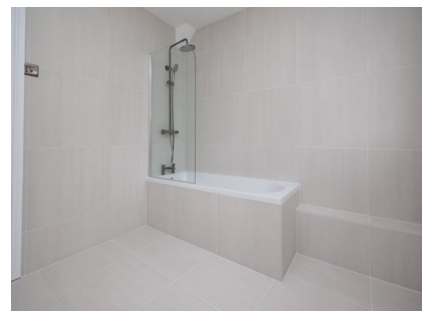
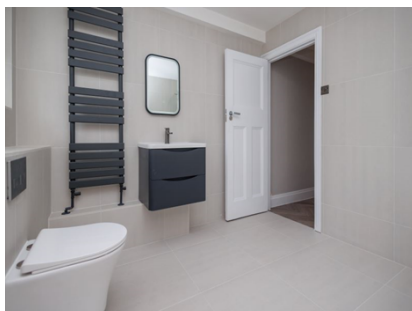
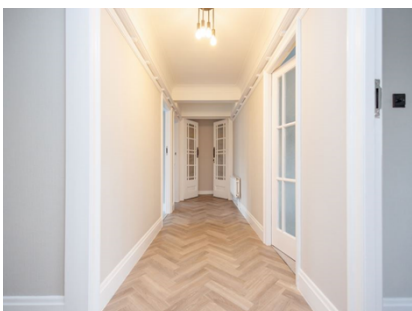
MRKT

PROPERTY EXPERTS

Richmond Hill, BH2 6EE

£2,200 Monthly

TO LET



Property Features:

- Unfurnished
- 1 Weeks rent payable on reservation
- Bournemouth Town Centre Location
- Central Heating
- Unfurnished

Description

Step into the property through a spacious entrance hall, adorned with parquet effect flooring that sets a consistent tone throughout. The interior design maintains a sophisticated ambiance with a simple and tasteful color palette of grey and white.

This property boasts a comfortable lounge and a practical kitchen diner. The layout is designed for practical living, ensuring a straightforward and functional arrangement of spaces. 4 Good sized double bedrooms complete this fantastic property.

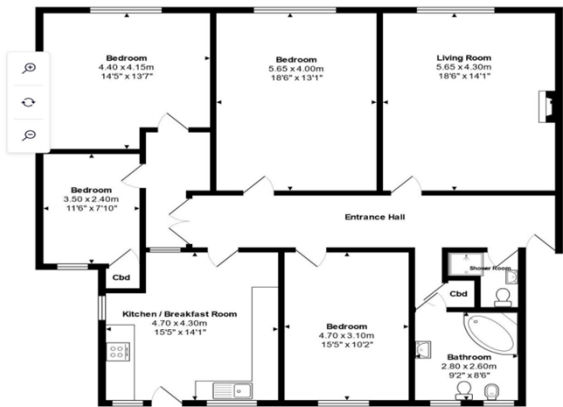
Beyond the property, enjoy easy access to Bournemouth's local ammenities, offering a mix of the fantastic beaches, nightlife and local shops and events. This 4-bedroom residence provides a tranquil living space while being conveniently located to explore the town's offerings, making it not just a home but a practical base for a balanced lifestyle. Experience the enduring charm of Victorian aesthetics indoors, coupled with the dynamic energy of Bournemouth's town center just a short walk away.

Parking: Parking is available next door in the NCP car park, the pricing is approx £100 a month per car.

Room Dimensions

-
-
-
-

Floor Plan



EPC Certificate

Energy Efficiency Rating			Environmental Impact (CO ₂) Rating		
	Current	Potential		Current	Potential
Very energy efficient - lower running costs			Very environmentally friendly - lower CO ₂ emissions		
(92-100) A			(92-100) A		
(81-91) B			(81-91) B		
(69-80) C			(69-80) C		
(55-68) D			(55-68) D		
(39-54) E			(39-54) E		
(21-38) F			(21-38) F		
(1-20) G			(1-20) G		
Not energy efficient - higher running costs			Not environmentally friendly - higher CO ₂ emissions		
England & Wales	EU Directive 2002/91/EC		England & Wales	EU Directive 2002/91/EC	