



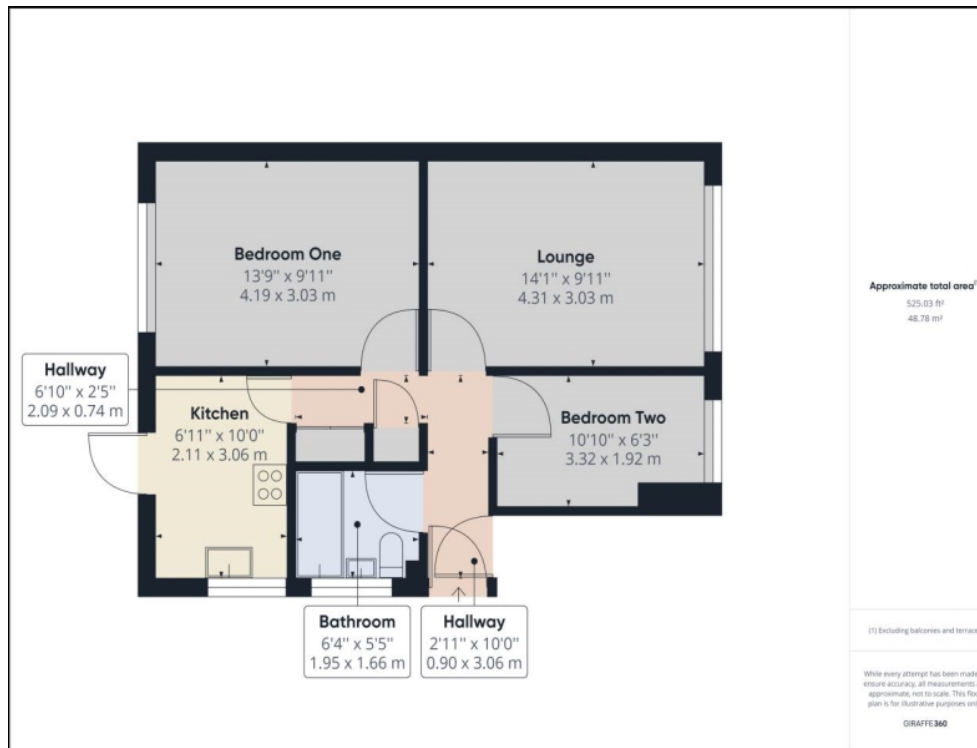
Gresswell Close, DA14 4AP

£1,685 Monthly
02088550212



Gresswell Close, Sidcup, DA14 4AP

Located on a quiet residential close is this stunning two bedroom ground floor masionette. The property comprises of two good sized bedrooms, modern family bathroom, large lounge and modern fully fitted kitchen. Externally the property boasts rear garden and garage. Offered unfurnished.



Energy Efficiency Rating		
	Current	Potential
<i>Very energy efficient - lower running costs</i>		
(92- A)		
(81-91) B		
(69-80) C		75
(55-68) D	58	
(39-54) E		
(21-38) F		
(1-20) G		
<i>Not energy efficient - higher running costs</i>		
England & Wales	EU Directive 2002/91/EC	

Environmental Impact (CO ₂) Rating		
	Current	Potential
<i>Very environmentally friendly - lower CO₂ emissions</i>		
(92- A)		
(81-91) B		
(69-80) C		
(55-68) D		
(39-54) E		
(21-38) F		
(1-20) G		
<i>Not environmentally friendly - higher CO₂ emissions</i>		
England & Wales	EU Directive 2002/91/EC	