

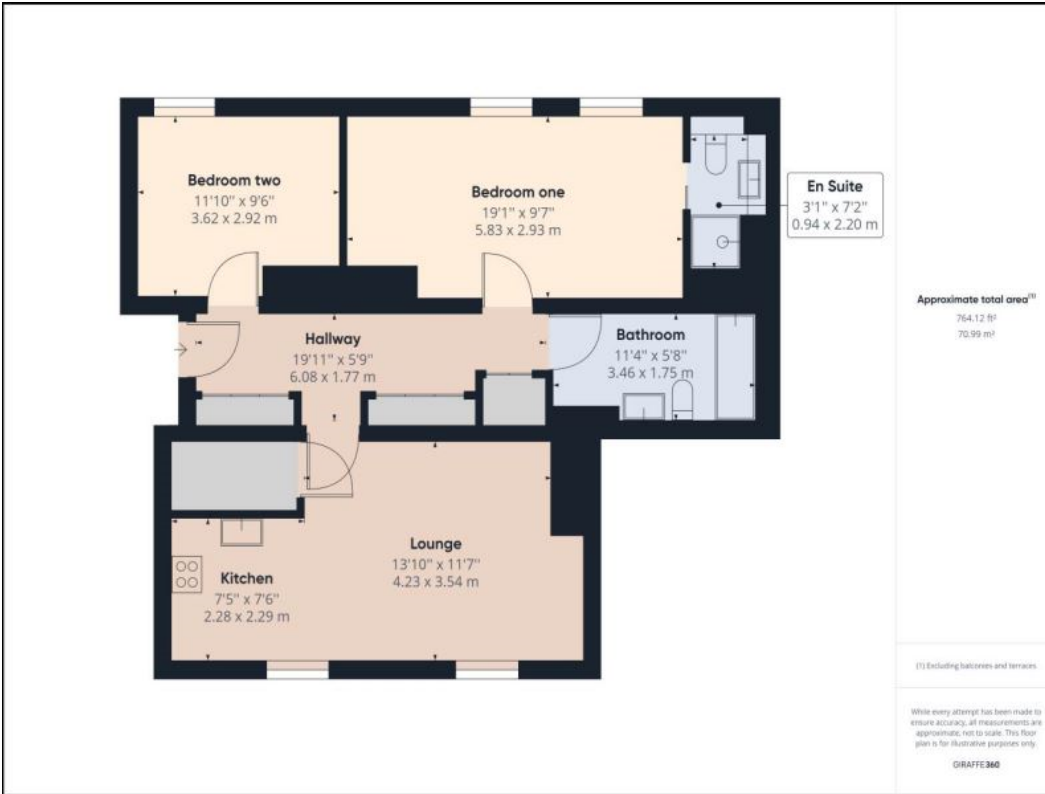


Martin Drive, DA2 6BF
 £299,999
 02088550212



Martin Drive, DA2 6BF

A stunning Grade 2 Edwardian 1910 converted ground floor apartment. Located within Martin House, this was once the nurse's accommodation for what was once Stone House Hospital. The seller has a detailed historical research document on the building, which will be left for the new owners. The apartment is a part of the Martin Drive Estate of 56 homes in front of site of the Stone House Hospital Estate. Martin House has been converted into 10 fabulous luxury apartments with well looked after gardens surrounding it, including a gated garden to the right to enjoy. Inside, the apartment has been kept well and its large windows complement its high ceilings. The mixture of period and modern gives the apartment a great uniqueness and character. Ideal location for schools, parks, travel and shopping by car, train, bus or foot. To fully appreciate this unique property, viewing is highly recommended.



Environmental Impact (CO ₂) Rating		
	Current	Potential
Very environmentally friendly - lower CO ₂ emissions		
(92- A		
(81-91) B		
(69-80) C		
(55-68) D		
(39-54) E		
(21-38) F		
(1-20) G		
Not environmentally friendly - higher CO ₂ emissions		
England & Wales	EU Directive 2002/91/EC	

Energy Efficiency Rating		
	Current	Potential
Very energy efficient - lower running costs		
(92- A		
(81-91) B		
(69-80) C		
(55-68) D		
(39-54) E		
(21-38) F		
(1-20) G		
Not energy efficient - higher running costs		
England & Wales	EU Directive 2002/91/EC	