



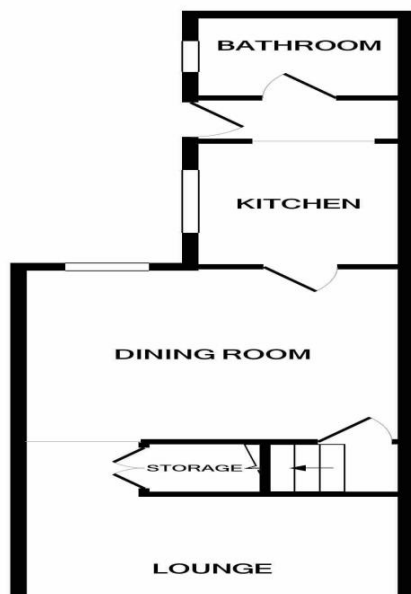
Shipstone Road | , Norwich, NR3 1JZ

£1,150 pcm

Gilson Bailey Lettings are delighted to offer this WELL PRESENTED two double bedroom, two bathroom Victorian house situated close to local shops, schools, pubs, parks and is within easy reach of the City centre. The accommodation comprises of a living room, separate dining room, modern kitchen, master bedroom with en-suite shower room, second double bedroom, main bathroom with shower over the bath, gas central heating, double glazing, courtyard, permit parking, Council Tax Band A, UNFURNISHED

Available From: 06 October 2025





Bedroom 1 (First Floor)

3.50m (11'6") x 3.40m (11'2")

Double bedroom, rear aspect window, wardrobe, radiator, door to en-suite shower room.

Bedroom 1 en-suite (First Floor)

Modern white suite comprising shower cubicle, WC and wash basin. Radiator, window.

Bedroom 2 (First Floor)

3.50m (11'6") x 3.40m (11'2")

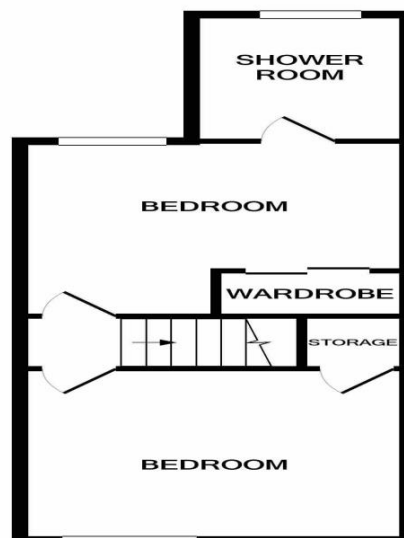
Second double bedroom, front aspect window, built in wardrobe, radiator.

Outside

Small rear courtyard area.

Parking

On street permit parking.



1ST FLOOR

Dining Room (Ground Floor)

3.50m (11'6") x 3.40m (11'2")

Separate dining room, rear aspect window, built in storage cupboard, radiator, stairs to first floor.

Kitchen (Ground Floor)

2.50m (8'3") x 2.00m (6'7")

Superb modern kitchen with ample storage and work surface. Appliances include gas hob, oven and cooker hood. Space and plumbing for additional appliances. Door to rear courtyard.

Living Room (Ground Floor)

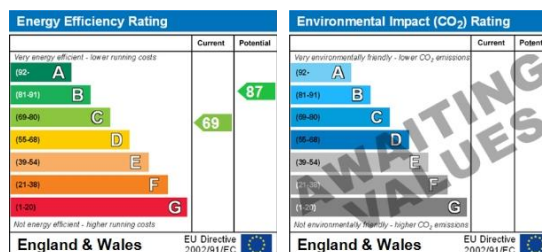
3.50m (11'6") x 3.40m (11'2")

Large living room with big front aspect window which allows much natural light in providing the room with a bright and welcoming feel. TV point, radiator.

Main Bathroom (Ground Floor)

Modern suite in white comprising bath with shower over, WC and wash basin. Radiator, frosted window.

Energy ratings



Directions: Leave the city via Magdalen Road, pass the Tesco Metro and Shipstone Road is second left.