



**Magpie Road | , Norwich, Norfolk, NR3 1JQ**

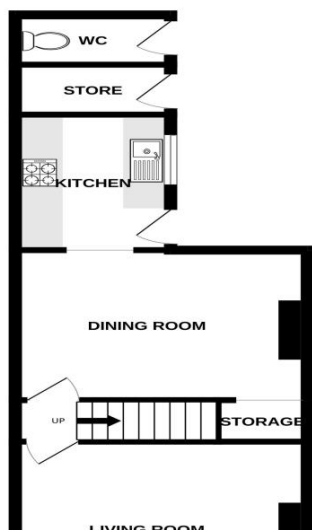
**£990 pcm**

**\*\* Gilson Bailey Lettings are delighted to offer\*\*** This well presented TWO-bedroom Victorian House which has been tastefully improved including NEW DECORATION, FLOORING and KITCHEN. The property is situated in a popular location just to THE NORTH OF THE CITY within walking distance of the City centre. The accommodation comprises of a Lounge, Dining Room and kitchen to the ground floor. There are Two bedrooms off the landing with an EN SUITE fitted bathroom. Outside is front garden and rear courtyard. Tax Band A. UNFURNISHED

Available From: Now



GROUND FLOOR


**Stairwell (Ground Floor)**

Door to

**First Floor Landing (First Floor)**

Doors to Bedrooms One and Two

**Bathroom (First Floor)**

Low level WC, hand wash basin, bath with shower over, window, radiator.

**Bedroom 1 (First Floor)**

3.77m ( 12'5") x 3.65m ( 12'0")

UPVC window, radiator, cupboard.

**Bedroom 2 (First Floor)**

3.00m ( 9'11") x 3.77m ( 12'5")

Window, radiator, door to

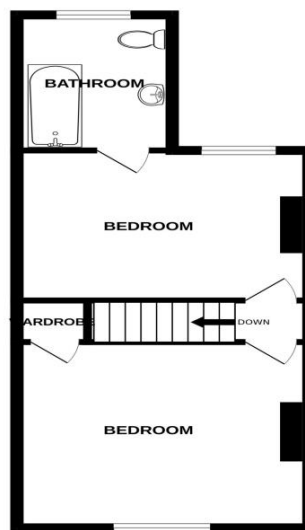
**Accommodation Comprises**

Door to

**Parking**

On street permit parking.

1ST FLOOR


**Dining Room (Ground Floor)**

3.77m ( 12'5") x 3.00m ( 9'11")

Window to rear, radiator, opening to

**Kitchen (Ground Floor)**

2.40m ( 7'11") x 2.07m ( 6'10")

Wall and base units, fitted oven and hob, single sink, window to side, space for washing machine and fridge to be included door to side.

**Living Room (Ground Floor)**

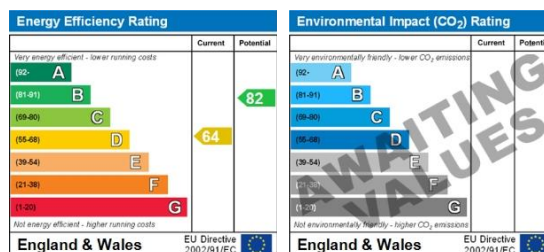
3.77m ( 12'5") x 3.65m ( 12'0")

UPVC window, radiator, door to

**Outside (Ground Floor)**

Front garden, courtyard rear garden with pathway to passage.

## Energy ratings



**Directions:** From the city centre proceed down Duke Street, straight over the roundabout onto Pitt Street which then becomes St Augustines Street. At the traffic lights turn right into Magpie Road.