



Newton House | , Newton Street, Newton St Faith, NR10 2AD

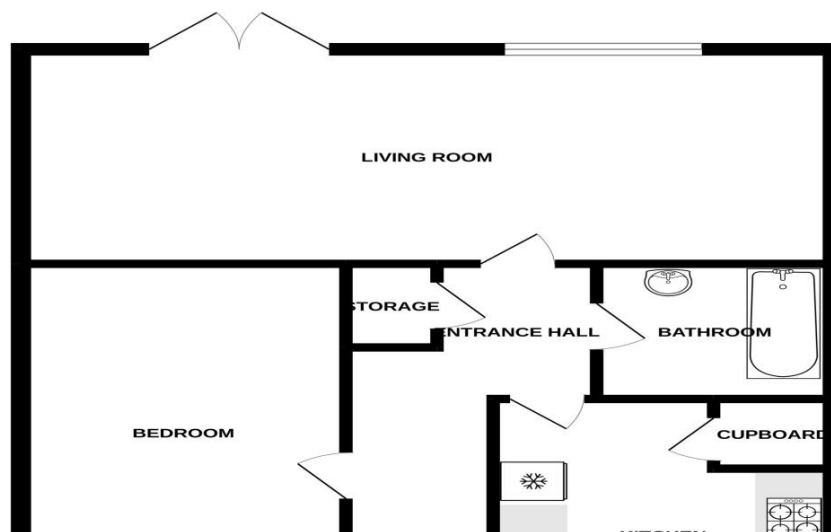
£795 pcm

Gilson Bailey Lettings are delighted to offer this one bedroom ground floor apartment situated in this village location close to local shops, schools, pubs and with easy access to the City via the A140 and NDR. The accommodation comprises of an entrance hall with storage, large living room with patio doors to garden, modern kitchen, double bedroom, bathroom with shower over the bath, private enclosed South facing garden, off street parking, double glazing, modern electric heating. Council Tax Band A, UNFURNISHED. **PRIVATE GARDEN**

Available From: Now



GROUND FLOOR



Living Room (Ground Floor)

6.10m (20'1") x 2.40m (7'11")

Large living room with patio doors to garden, quality laminate floor, heater, TV point.

Agent Note

The tenants are in residence so these details and photos are only an indication of the property and some remedial work may be in progress.

Garden

Fully enclosed private South facing garden with patio area.

Parking

Off street residents parking.

Bathroom (Ground Floor)

Bathroom suite in white comprising bath with shower over, WC and wash basin. Chrome heated towel rail, tiled floor.

Bedroom (Ground Floor)

4.90m (16'1") x 2.20m (7'3")

Large double bedroom, front aspect window, laminate floor, heater.

Entrance Hall (Ground Floor)

Part glazed front door to entrance hall. Laminate floor, doors to all rooms.

Kitchen (Ground Floor)

Modern kitchen with ample storage and work surface. Appliances include electric hob, oven, cooker hood, fridge/freezer and washing machine. Tiled floor.

Energy ratings

Energy Efficiency Rating		Environmental Impact (CO ₂) Rating	
Current	Potential	Current	Potential
<p>Very energy efficient - lower running costs</p> <p>(92-100) A</p> <p>(81-91) B</p> <p>(69-80) C</p> <p>(55-68) D</p> <p>(39-54) E</p> <p>(21-38) F</p> <p>(1-20) G</p> <p>Not energy efficient - higher running costs</p>			
<p>Very environmentally friendly - lower CO₂ emissions</p> <p>(92-100) A</p> <p>(81-91) B</p> <p>(69-80) C</p> <p>(55-68) D</p> <p>(39-54) E</p> <p>(21-38) F</p> <p>(1-20) G</p> <p>Not environmentally friendly - higher CO₂ emissions</p>			
England & Wales		England & Wales	
EU Directive 2002/91/EC		EU Directive 2002/91/EC	

Directions: Leave the City via the Aylsham Road. Proceed over the outer ring road onto the A140 Cromer Road. Proceed over the NDR and then take the 2nd right signposted for Newton St Faith. Turn left onto Newton Street and the property will be found on the right.