



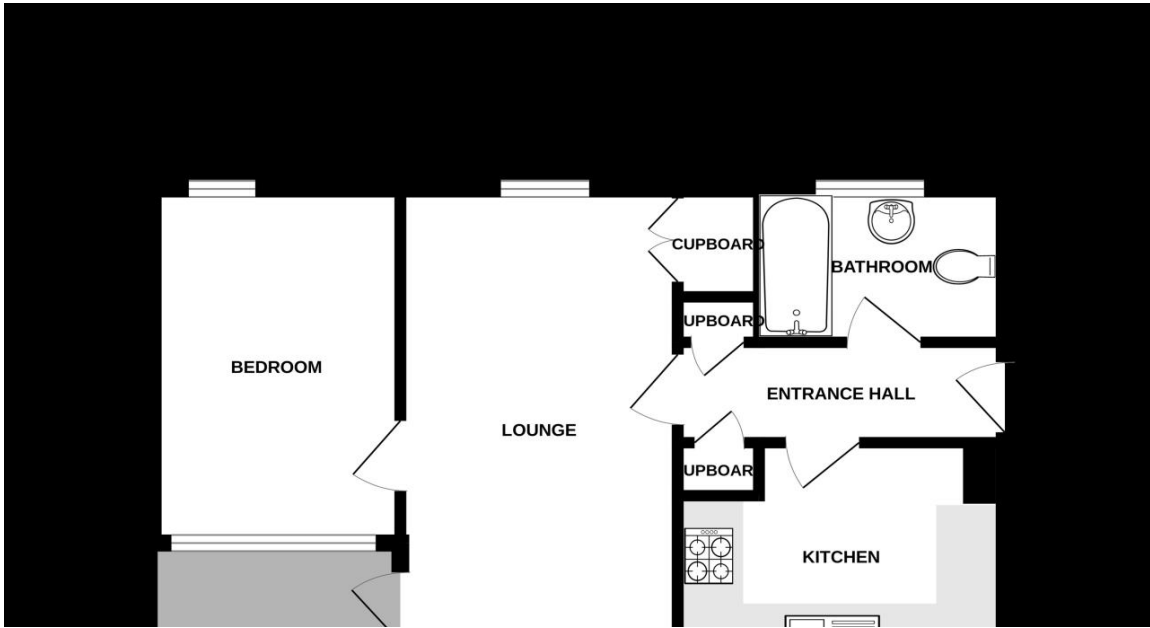
Half Mile Road | , Norwich, Norfolk, NR3 2RD

£745 pcm

****NORTH CITY FIRST FLOOR FLAT **** Gilson Bailey are delighted to offer this ONE BEDROOM, FIRST FLOOR FLAT located to the North of Norwich WITHIN WALKING DISTANCE TO THE CITY CENTRE. Accommodation comprising entrance hall, lounge/diner, kitchen, bedroom, BALCONY and a bathroom. The flat benefits from UPVC double glazing and gas central heating. Tax Band A. UNFURNISHED

Available From: Now





Accommodation Comprises

Entrance Hall Doors to lounge/Diner, Kitchen and Bathroom .

Bathroom (First Floor)

Panelled bath with shower fitment over, low level WC, hand wash basin, radiator, frosted UPVC double glazed window.

Bedroom (First Floor)

4.42m (14'7") x 5.77m (19'0")
Two UPVC Double glazed windows, radiator.

Kitchen (First Floor)

2.96m (9'9") x 2.47m (8'2")
UPVC window, wall and base units, single sink and drainer, space for washing machine, fitted oven and hob, gas boiler.

Lounge/Diner (First Floor)

5.77m (19'0") x 3.31m (10'11")
Two UPVC double glazed windows, two radiators' doors Bedroom and Balcony.

Energy ratings

Energy Efficiency Rating		Environmental Impact (CO ₂) Rating	
	Current	Potential	
Very energy efficient - lower running costs			Very environmentally friendly - lower CO ₂ emissions
(92-100) A			(92-100) A
(81-91) B			(81-91) B
(69-80) C			(76-80) C
(55-68) D			(55-68) D
(39-54) E			(39-54) E
(21-38) F			(15-20) F
(1-20) G			(1-10) G
Not energy efficient - higher running costs			Not environmentally friendly - higher CO ₂ emissions
England & Wales	EU Directive 2002/91/EC	74	England & Wales
		75	EU Directive 2002/91/EC

Directions: Head towards St Vedast St, Turn left onto Riverside Rd, At the roundabout, take the 1st exit onto Barrack St, At the roundabout, take the 2nd exit onto St Crispins Rd, At the roundabout, take the 2nd exit onto Pitt St, Turn left onto Half Mile Rd