



Sunny Grove | , Costessey, Norwich, NR5 0EJ

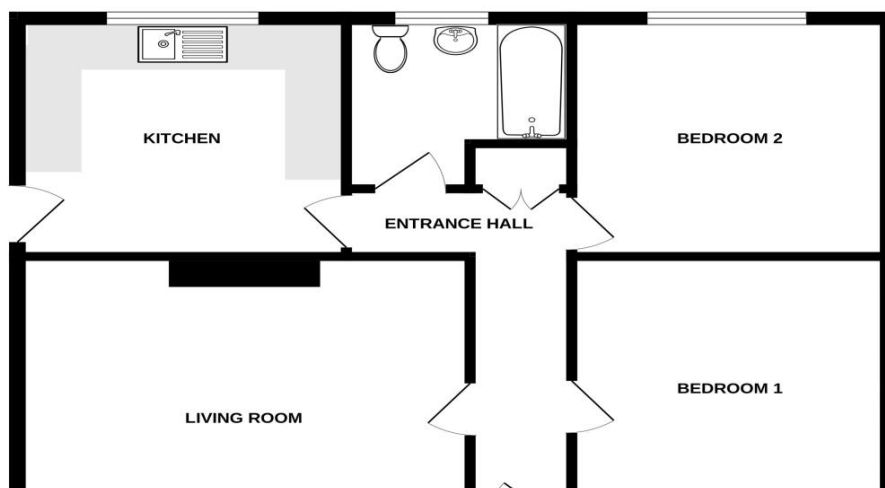
£1,100 pcm

Gilson Bailey Lettings are delighted to offer this well presented TWO DOUBLE bedroom DETACHED BUNGALOW situated in this popular residential area close to local shops, schools and within easy reach of the City centre. The accommodation comprises of an entrance hall, large living room with bay window, modern kitchen, two double bedrooms, bathroom with shower over the bath, private garden, off street parking, double glazing, gas central heating, Council Tax Band C, UNFURNISHED

Available From: 16 September 2025



GROUND FLOOR



Kitchen (Ground Floor)

3.20m (10'6") x 3.00m (9'11")

Superb kitchen with ample storage and work surface. Please note that no appliances are supplied. Door to garden.

Living Room (Ground Floor)

4.00m (13'2") x 3.00m (9'11")

Large living room with big front aspect bay window which allows much natural light in providing the room with a bright and relaxed feel. Radiator.

Garden

Large fully enclosed private garden mainly laid to lawn. Timber shed.

Parking

Off street private driveway parking. Unrestricted on street parking.

Bathroom (Ground Floor)

Suite comprising bath with electric shower over, WC and wash basin. Frosted window, radiator.

Bedroom 1 (Ground Floor)

3.70m (12'2") x 3.00m (9'11")

Double bedroom, front aspect window, radiator.

Bedroom 2 (Ground Floor)

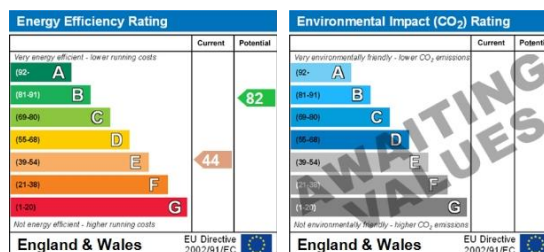
3.70m (12'2") x 3.10m (10'3")

Second double bedroom, rear aspect window overlooking the garden. Radiator.

Entrance Hall (Ground Floor)

Part glazed front door to entrance hall, built in cupboard, radiator, doors to all rooms.

Energy ratings



Directions: Leave the city via the Dereham Road. Proceed over the outer ring road, past the lights at Lidl and at the second lights turn left by the Cherry Tree pub onto Norwich Road, Sunny Grove is the 4th on the left.