



Longfields Road | , Thorpe St Andrew, Norwich, NR7
ON1

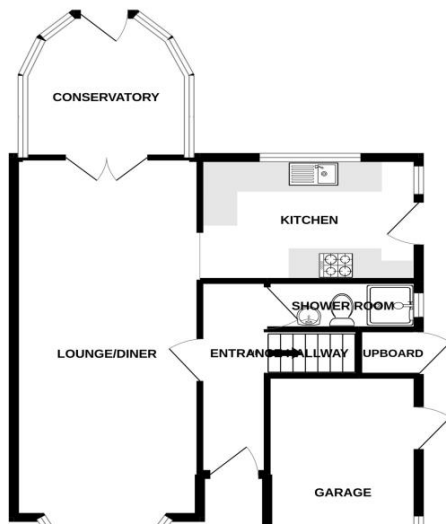
£1,800 pcm

Gilson Bailey Lettings are delighted to offer this stunning detached family home with four bedrooms and an outside multi use studio with entrance hall, spacious lounge/diner, kitchen, conservatory and shower room to the ground floor. On the first floor there are four bedrooms and a bathroom off landing. Outside there is a front driveway providing off road parking and to the rear there is a brick built studio/office with a potential utility room and an enclosed lawned garden with patio seating area. The house benefits from double glazing and gas heating. Energy Rating: C, Council Tax Band D, Furnished.

Available From: 25 May 2026



GROUND FLOOR



Bedroom 4

2.51m (8'3") x 2.38m (7'10")
Double glazed window to rear, radiator.

Conservatory

2.94m (9'8") x 2.74m (9'0")
PVC and double glazed construction with door to rear.

Entrance Hall

Doors to lounge/diner, kitchen, shower room, garage and stairs to first floor.

First Floor Landing

Doors to four bedrooms and bathroom.

Integral Garage

4.74m (15'7") x 2.28m (7'6")
Power and lighting, boiler.

Kitchen

3.81m (12'6") x 2.48m (8'2")
Fitted wall and base units with worktops over, sink and drainer, five ring gas hob with extractor over, fitted oven, space for fridge/freezer and dishwasher, double glazed window to rear, PVC door to side.

Location

Thorpe St Andrew is a highly sought after suburb offering amenities to include schooling for all ages, popular local pubs and restaurants by the iconic RiverGreen, shops and supermarkets. There is ease of access to the centre of Norwich, Broadland Business Park, A47 southern bypass, NDR and the Norfolk Broads.

Lounge/Diner

7.26m (23'10") x 3.25m (10'8")
Double glazed window to front, two radiators.

Outside Front

Paved driveway providing off road parking.

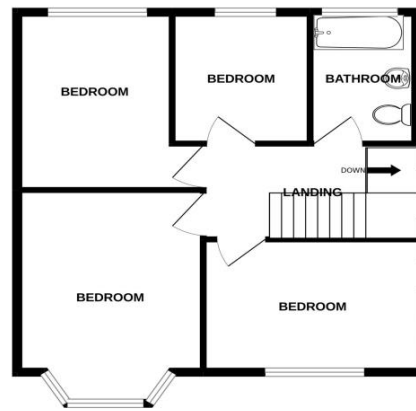
Outside Rear

Patio seating area leading to lawned garden, enclosed by timber fencing, studio/office with heating and potential utility room.

Shower Room

2.43m (8'0") x 0.83m (2'9")
Walk in shower, low level WC, hand wash basin, heated towel rail, frosted double glazed window to side.

1ST FLOOR



Bathroom

2.46m (8'1") x 1.77m (5'10")
Panelled bath with rainfall shower over, low level WC, hand wash basin, heated towel rail, frosted double glazed window to rear.

Bedroom 1

4.36m (14'4") x 3.32m (10'11")
Double glazed window to front, radiator.

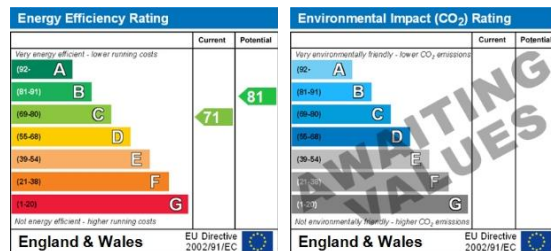
Bedroom 2

3.50m (11'6") x 3.32m (10'11")
Double glazed window to rear, radiator.

Bedroom 3

3.78m (12'5") x 2.66m (8'9")
Double glazed window to front and side, radiator.

Energy ratings



Directions: Leave Norwich via Plumstead Road, continue straight over the Heartsease Roundabout, turn right into Spinney Road and then turn left into Longfields.