

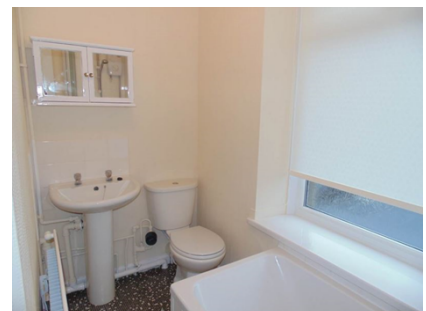
JW Homes

Estate & Letting Agents

Bedwellty Road, NP12 3HE

£500 Monthly

TO LET



Property Features:

- Unfurnished
- First Floor Flat
- 1 Bedroom
- Off Road Parking
- Fitted Kitchen
- Family Bathroom
- Gas Central Heating
- EPC Rating D


Description

****POPULAR LOCATION**** ****WALKING DISTANCE TO LOCAL AMENITIES**** ****CLOSE TO BLACKWOOD TOWN CENTRE**** ****1 BEDROOM**** ****RENT £500PCM**** ****HOLDING DEPOSIT £100**** ****RENT REMAINDER £400.00**** ****BOND £600.00****

JW Homes have pleasure in offering FOR RENT this First Floor Flat situated in Cefn Fforest within close proximity to Blackwood Town Centre, Schools, Local amenities, Public transport and Major road networks. Accommodation briefly comprising 1 Bedroom, Living room, Kitchen and Bathroom. Further benefits include gas central heating and partial double glazing. NO PETS, NO SMOKERS. EPC RATING: D

RENT £500 PCM
HOLDING DEPOSIT £100
RENT REMAINDER £400
BOND £600

EPC Certificates

Energy Efficiency Rating			Environmental Impact (CO ₂) Rating		
	Current	Potential		Current	Potential
<i>Very energy efficient - lower running costs</i>			<i>Very environmentally friendly - lower CO₂ emissions</i>		
(92-)			(92-)		
(81-91)			(81-91)		
(69-80)			(69-80)		
(55-68)			(55-68)		
(39-54)			(39-54)		
(21-38)			(21-38)		
(1-20)			(1-20)		
<i>Not energy efficient - higher running costs</i>			<i>Not environmentally friendly - higher CO₂ emissions</i>		
	60	67		3	2
England & Wales	EU Directive 2002/91/EC		England & Wales	EU Directive 2002/91/EC	