

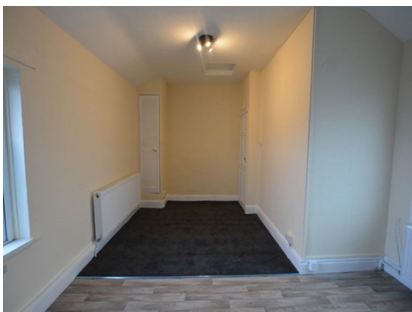


Estate & Letting Agents

Bedwellty Road, NP12 3HE

£575 Monthly

TO LET



Property Features:

- Unfurnished
- First Floor Flat
- 1 Bedroom
- Open Plan/Living Space
- Recently Refurbished
- New Fitted Kitchen
- New Shower Room
- Gas Central Heating

Description

****REFURBISHED FIRST FLOOR FLAT**1 BEDROOM**OPEN PLAN LIVING SPACE**POPULAR LOCATION**WALKING DISTANCE TO LOCAL AMENITIES**CLOSE TO BLACKWOOD TOWN CENTRE**PROFESSIONAL APPLICANTS REQUIRED**RENT £575.00PCM**HOLDING DEPOSIT £100.00**RENT REMAINDER **£475.00**BOND £700.00****

JW Homes have pleasure in offering FOR RENT this First Floor Flat situated in Cefn Fforest within close proximity to Blackwood Town Centre, Schools, Local amenities, Public transport and Major road networks. Accommodation briefly comprising 1 Bedroom, Open Plan Living Room, New Fitted Kitchen and Shower Room. Further benefits include Gas central heating and Partial double glazing.

PROFESSIONAL APPLICANTS ONLY, NO PETS, NO SMOKERS. EPC RATING: D COUNCIL TAX BAND-


RENT: £575.00

HOLDING DEPOSIT: £100.00

REMAINDER: £475.00

BOND - £700.00

EPC Certificates

Energy Efficiency Rating			Environmental Impact (CO ₂) Rating		
	Current	Potential		Current	Potential
Very energy efficient - lower running costs			Very environmentally friendly - lower CO ₂ emissions		
(92- A			(92- A		
(81-91) B			(81-91) B		
(69-80) C		72	(69-80) C		
(55-68) D	61		(55-68) D		
(39-54) E			(39-54) E		
(21-38) F			(21-38) F		
(1-20) G			(1-20) G	3	2
Not energy efficient - higher running costs			Not environmentally friendly - higher CO ₂ emissions		
England & Wales EU Directive 2002/91/EC 			England & Wales EU Directive 2002/91/EC 