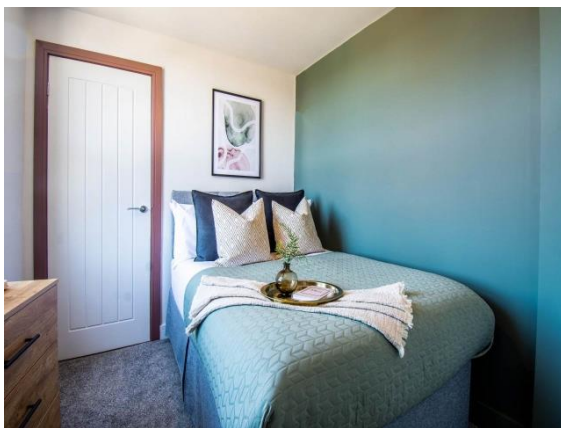


# Lets Live Leeds

www.letsliveleeds.com



## Highfield Crescent (Room 4)

, Wortley, Leeds, West Yorkshire, LS12 4DA

### Rental £635 pcm

Room in 1 bedroom House Share available Now

Regent House, 2 Regent Road, Horsforth, LS18 4NP  
[alix.newton-letslive@home.letmc.com](mailto:alix.newton-letslive@home.letmc.com)

0113 887 8605

Opening Times

Mon 09.00 - 18.00; Tues 09.00 - 18.00  
Wed 09.00 - 18.00; Thurs 09.00 - 18.00  
Fri 09.00 - 18.00; Sat 10.00 - 16.00; Sun Closed

## \* Furnished

### Situation

LETS LIVE LEEDS PRESENTS: 2 HIGHFIELD CRESCENT ENSUITE ROOM 4 AVAILABLE NOW!! This beautiful recently renovated house share boast 5 Spacious En-Suite bedrooms. COMMUNAL CLEANER ATTENDS MONTHLY! ALL BILLS INCLUDED! Communal Areas are modern, spacious and refurbished to a very high standard with all the mod cons (Inc Gas Hob!) This extraordinary house share, benefits from a beautiful luxury lounge and kitchen which allows plenty of communal space for all 5 lucky tenants who have the opportunity to reserve this property. All rooms are decorated to a very high standard with plenty of storage space. This property is one of our premium, hotel standard properties and you don't want to miss out! Ample On Street Parking for those who Drive, but easy commute to the Leeds City Centre. Plenty of local amenities also available at your door step. Contact us today to arrange a viewing!

All measurements are approximate.

### Further Information

The deposit required is £300

The landlord is willing to rent this home to Employed, Self Employed, Own Means

The landlord is willing to rent the property for a minimum of 6 Months

### Accommodation

Property Ref: inst-4969

Creation Date: 27/06/2026

#### IMPORTANT INFORMATION

For clarification, we wish to inform the prospective tenant that we have prepared these details as a general guide. The agent has not carried out a detailed survey nor tested the services, appliances, or specific fittings (unless otherwise stated), and no warranty can be given as to their condition. All room measurements are taken at floor level. We strongly recommend that all the information which we provide about the property is verified by yourself and your advisers. The contents of this publication are © Lets Live Leeds, 2026. Lets Live Leeds Registered in England No. 7784430