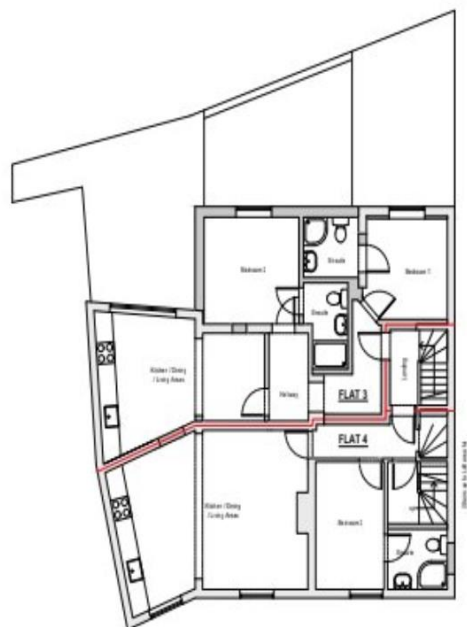




GROUND FLOOR PLAN
Scale - 1:100 @ A3



FIRST FLOOR PLAN
Scale - 1:100 @ A3

Broad Street
, Loughborough, LE11 5AB

Rental £200 Weekly
2 bedroom House available 02 July 2025

3 Ashby Square, Loughborough, , LE11 5AA
loughborough@loc8me.co.uk

01509 239099

Opening Times

Mon 08.30 - 17.00; Tues 08.30 - 17.00
Wed 08.30 - 17.00; Thurs 08.30 - 17.00
Fri 08.30 - 17.00; Sat 10.00 - 15.00; Sun Closed

* Furnished

Situation

Price: £200 per person per week (Inclusive) Property Reference: 3975 Energy Performance Rating: C Council tax band: A Key Features: Modern Living: This newly refurbished two-bedroom ground-floor flat offers a contemporary living environment with stylish updates. Ideal for students or professionals, it is designed for comfort and convenience, featuring sleek interiors that elevate the living experience. Prime Location: Located in the heart of the town centre, you'll enjoy easy access to all amenities. Sainsbury's, along with a variety of shops, cafes, and entertainment options, are just a short walk away, offering both convenience and vibrancy.

Comfortable Accommodation: The flat boasts two spacious double bedrooms, one of which includes an ensuite bathroom, providing an added level of privacy and comfort for residents. Campus Accessibility: Bus routes to the university are conveniently nearby, ensuring a quick and hassle-free commute to campus, making it a perfect location for those balancing academics or work with daily life in town. This flat offers modern comforts, prime accessibility, and an ideal location for both students and professionals. Enjoy hassle-free living with loc8me's all-inclusive package! Covering all your essential bills - gas, electric, water, TV licence, broadband and contents insurance, so you'll have peace of mind in your home. Plus, for every household that signs up, we're partnering with Ecologi to plant a tree, giving you a unique URL to track its location for life. Make a positive impact on the environment while enjoying a seamless lifestyle.

<https://ecologi.com/capgemini>
Property Ref: inst-20788

All measurements are approximate.

Further Information

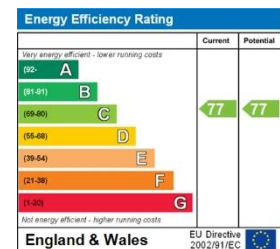
The deposit required is £300

The landlord is willing to rent this home to Student

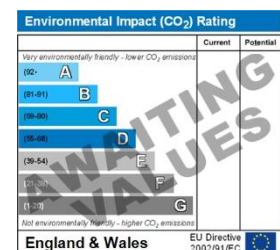
The landlord is willing to rent the property for a minimum of 12 Months and a maximum of 12 Months

Energy Performance Certificates

This home's performance is rated in terms of the energy use per square metre of floor area, energy efficiency based on fuel costs and environmental impact based on carbon dioxide (CO₂) emissions.



The energy efficiency rating is a measure of the overall efficiency of a home. The higher the rating the more energy efficient the home is and the lower the fuel bills will be.



The environmental impact rating is a measure of a home's impact on the environment in terms of carbon dioxide (CO₂) emissions. The higher the rating the less impact it has on the environment.

Creation Date: 30/04/2025

IMPORTANT INFORMATION

For clarification, we wish to inform the prospective tenant that we have prepared these details as a general guide. The agent has not carried out a detailed survey nor tested the services, appliances, or specific fittings (unless otherwise stated), and no warranty can be given as to their condition. All room measurements are taken at floor level. We strongly recommend that all the information which we provide about the property is verified by yourself and your advisers. The contents of this publication are © Orange Living Limited, 2025. Orange Living Limited Registered in England No. 06537787