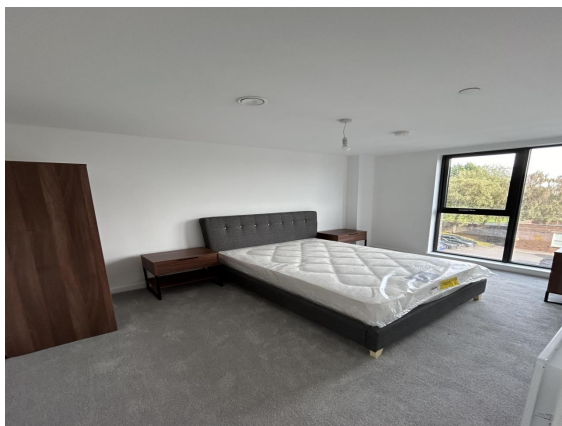


# HG Premier Lettings



**The Exchange**  
, Poll Street, Preston, PR1 1AW

**Rental £905 pcm**  
1 bedroom Flat / Apartment available Now

Unit 1, Bishopgate Gardens, Ormskirk Road, PR1 2QP  
[preston-locallettingsnw@home.letmc.com](mailto:preston-locallettingsnw@home.letmc.com)

**01772 969014**

#### Opening Times

Mon 09.00 - 17.00; Tues 09.00 - 17.00  
Wed 09.00 - 17.00; Thurs 09.00 - 17.00  
Fri 09.00 - 17.00; Sat Closed; Sun Closed

# HG Premier Lettings

\* Furnished

## Situation

Welcome to our exquisite development, The Exchange, offering a truly elevated living experience. Situated in Preston City Centre, these apartments combine contemporary design with an array of exceptional amenities. Discover the perfect balance of style, comfort, and convenience. This property is composed of an open plan lounge and kitchen area, with a spacious double bedroom and a bathroom which have both been finished to a high standard. The open plan lounge benefits from floor to ceiling windows, and the kitchen area is modernized with integrated appliances. Comprising of 200 stylish apartments, The Exchange will deliver a new standard of premium modern living to the local rental market, right in the heart of the city's newest emerging neighbourhood. Residents will benefit from a host of on-site amenities, including a gym, concierge and secure bicycle storage. Setting The Exchange apart from other developments, the scheme will also offer a resident's lounge and roof garden, helping to create a relaxing community space for tenants to meet and unwind.

All measurements are approximate.

## Further Information

The deposit required is £905

The landlord is willing to rent this home to Employed, Self Employed, Unemployed, Student, Own Means, Retired, Company, Council

The landlord is willing to rent the property for a minimum of 6 Months and a maximum of 24 Months

## Accommodation

Property Ref: inst-4622

Creation Date: 13/07/2025

### IMPORTANT INFORMATION

For clarification, we wish to inform the prospective tenant that we have prepared these details as a general guide. The agent has not carried out a detailed survey nor tested the services, appliances, or specific fittings (unless otherwise stated), and no warranty can be given as to their condition. All room measurements are taken at floor level. We strongly recommend that all the information which we provide about the property is verified by yourself and your advisers. The contents of this publication are © Local Lettings (NW) Limited , 2025. Local Lettings (NW) Limited Registered in England No. 08211074