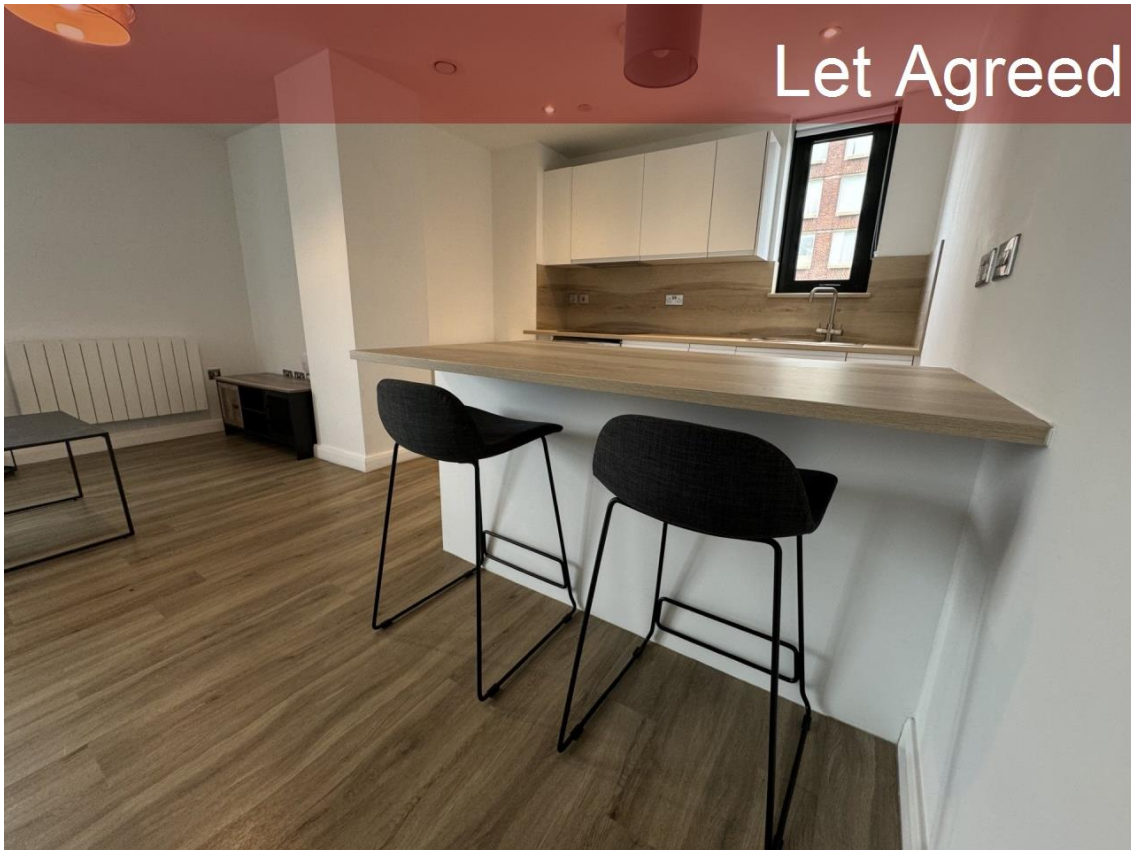


# HG Premier Lettings



## Bishopgate Gardens

, Bishopgate , Preston, PR1 1AT

Rental £1,150 pcm  
2 bedroom Flat / Apartment available Now

Unit 1, Bishopgate Gardens, Ormskirk Road, PR1 2QP  
[preston@hgpremierlettings.com](mailto:preston@hgpremierlettings.com)

01772 969014

### Opening Times

Mon 09.00 - 17.00; Tues 09.00 - 17.00  
Wed 09.00 - 17.00; Thurs 09.00 - 17.00  
Fri 09.00 - 17.00; Sat Closed; Sun Closed

# HG Premier Lettings

- \* Furnished
- \* Double Bedroom
- \* Kitchen Diner

- \* Blinds Fitted Throughout
- \* Double Glazed
- \* Hybrid Working Facilities

- \* Concierge
- \* Front Garden
- \* Washing Machine Included

## Situation

A Fantastic Opportunity to rent a Luxurious Apartment Situated in Preston City Centre. The Apartments are Truly Unique and have been Finished to the Highest Standard Throughout including Many High Quality Appointments and Fittings. The Apartments are Ideally Located to Make the Most of Everything Preston City Centre has to Offer, It is only a Short Walk from Local Restaurants, Bars, Preston Market and Local Transport Links Including Preston's Bus and Train Station. In Bishopgate Gardens you will have full access to the On Site Concierge Service, In House Coffee Shop, Shared Working Accommodation and On Site Residency Manager that will Create a Fantastic Area for Residents to Work and Socialise. The Apartments are Coming Soon so Register Your Interest Today to Avoid Disappointment.

## Accommodation

All measurements are approximate.

## Further Information

The deposit required is £1,326

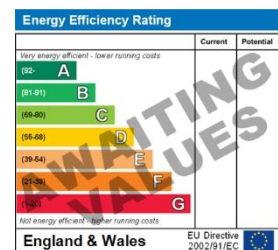
The landlord has requested to include National Fibre provide broadband/fibre to this property, all connections must be made through British fibre networks (Welcome packs will be provided on move in)., It has been mutually agreed between the landlord and tenant that the rent is paid 6 months upfront. If the tenant is to renew, this cannot be changed to monthly payments.

The landlord is willing to rent this home to Employed, Self Employed, Unemployed, Student, Own Means, Retired, Company, Council

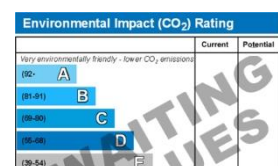
The landlord is willing to rent the property for a minimum of 6 Months and a maximum of 24 Months

## Energy Performance Certificates

This home's performance is rated in terms of the energy use per square metre of floor area, energy efficiency based on fuel costs and environmental impact based on carbon dioxide (CO<sub>2</sub>) emissions.



The energy efficiency rating is a measure of the overall efficiency of a home. The higher the rating the more energy efficient the home is and the lower the fuel bills will be.



Property Ref: inst-4422

Creation Date: 04/07/2024

## IMPORTANT INFORMATION

For clarification, we wish to inform the prospective tenant that we have prepared these details as a general guide. The agent has not carried out a detailed survey nor tested the services, appliances, or specific fittings (unless otherwise stated), and no warranty can be given as to their condition. All room measurements are taken at floor level. We strongly recommend that all the information which we provide about the property is verified by yourself and your advisers. The contents of this publication are © Local Lettings (NW) Limited, 2024. Local Lettings (NW) Limited Registered in England No. 08211074