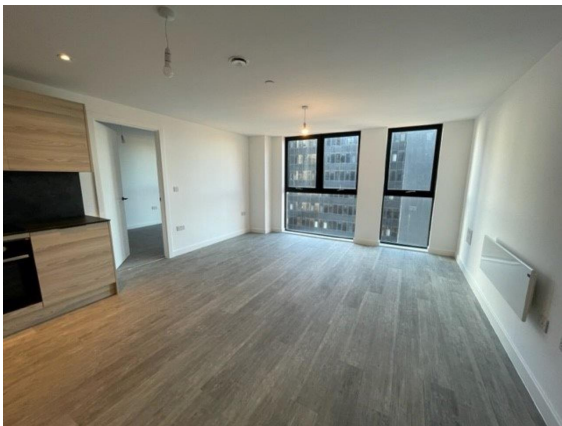


# HG Premier Lettings



## Urban Green

, 75 Seymour Grove, Old Trafford, Manchester, M16 0UP

**Rental £1,250 pcm**  
2 bedroom House available 02 May 2026

2-4 Wigan Road, Hindley, Wigan, WN2 3BE  
[Wigan@hgpremierlettings.co.uk](mailto:Wigan@hgpremierlettings.co.uk)

**01942 254 999**

### Opening Times

Mon 09.00 - 17.00; Tues 09.00 - 17.00  
Wed 09.00 - 17.00; Thurs 09.00 - 17.00  
Fri 09.00 - 17.00; Sat Closed; Sun Closed

# HG Premier Lettings

\* Unfurnished

## Situation

A stylish and contemporary two-bedroom, two-bathroom apartment located in the heart of Old Trafford, offering modern living in an Urban Green. This beautifully presented property features a spacious open-plan living and dining area, flooded with natural light and finished to a high standard throughout. The sleek, fully fitted kitchen comes complete with integrated appliances, perfect for both everyday living and entertaining. The apartment boasts two well-proportioned double bedrooms, including a generous principal bedroom with a modern en-suite shower room. A second contemporary bathroom serves the additional bedroom and guests, both finished with high-quality fixtures and fittings. Additional benefits include secure entry, well-maintained communal areas, and excellent transport links, with easy access to Manchester city centre. Ideal for professionals, couples or friends. \*Secure parking is available at an additional £75pcm\* Please call to arrange your viewing today on 01942 254999

## Accommodation

All measurements are approximate.

## Further Information

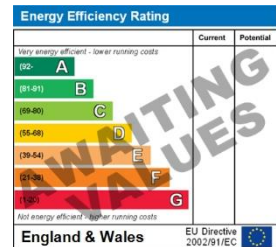
The deposit required is £1,442.31  
The landlord has requested to include National Fibre provide broadband/fibre to this property, all connections must be made through British fibre networks.

The landlord is willing to rent this home to Employed

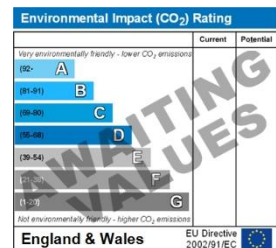
The landlord is willing to rent the property for a minimum of 6 Months and a maximum of 6 Months

## Energy Performance Certificates

This home's performance is rated in terms of the energy use per square metre of floor area, energy efficiency based on fuel costs and environmental impact based on carbon dioxide (CO<sub>2</sub>) emissions.



The energy efficiency rating is a measure of the overall efficiency of a home. The higher the rating the more energy efficient the home is and the lower the fuel bills will be.



The environmental impact rating is a measure of a home's impact on the environment in terms of carbon dioxide (CO<sub>2</sub>) emissions. The higher the rating the less impact it has on the environment.  
Creation Date: 21/04/2026

Property Ref: inst-5981

## IMPORTANT INFORMATION

For clarification, we wish to inform the prospective tenant that we have prepared these details as a general guide. The agent has not carried out a detailed survey nor tested the services, appliances, or specific fittings (unless otherwise stated), and no warranty can be given as to their condition. All room measurements are taken at floor level. We strongly recommend that all the information which we provide about the property is verified by yourself and your advisers. The contents of this publication are © HG Premier Lettings, 2026. HG Premier Lettings Registered in England No. 08211074