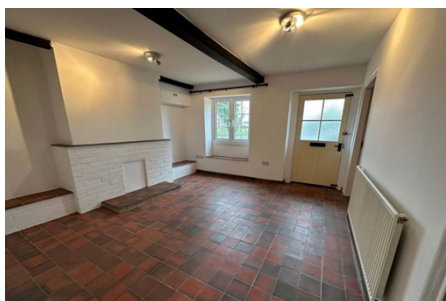


House 'To Let'

£1,395 PCM

Rose Cottage, Wanswell



KEY FEATURES

Semi Detached - Three Bedroom Cottage - Newly Fitted Kitchen With Cooker - Porch - Dining Area With Fitted Cupboards - Lounge - Reception Room - New Bathroom With Shower Over Bath - Gas C/H - Part Double Glazing - Garden to Rear - Off Street - Loft Space - EPC- D

EPC - D - DEPOSIT £1609.00

Description

This newly updated three bedroom semi detached cottage set in a semi rural setting and within walking distance to the village pub! The accommodation includes a rear entrance porch, newly fitted kitchen with electric cooker, dining area with two fitted cupboards, living room, reception room, two double bedrooms and a further large single bedroom and a newly fitted white bathroom with shower over bath. Further benefits include gas central heating and part double glazing, loft room, low maintenance garden area to front with garden to rear with patio area and off street parking. Available now for six months to long term. Would suit a professional a couple/family. Pets considered. EPC-D



Situation

Wanswell is a hamlet approximately 2 miles north of Berkeley with its own village pub (The Salmon), situated to the west of the M5 and the A38, to the north of Bristol and to the south of Gloucester and Cheltenham. Berkeley Castle has been home to the Berkeley family for some 900 years, a popular and very interesting historical attraction. The town was also the home of Edward Jenner, pioneer of the smallpox vaccine. The Jenner Museum is a short walk from the High Street, past the brick cottage that Jenner gave to James Phipps, who as a boy was the first person to receive inoculation. A thriving small rural town, Berkeley has a variety of shops, hotel, public houses and a primary school.



Local Authority & Council Tax

Council Tax Band - C



Contact & Viewing

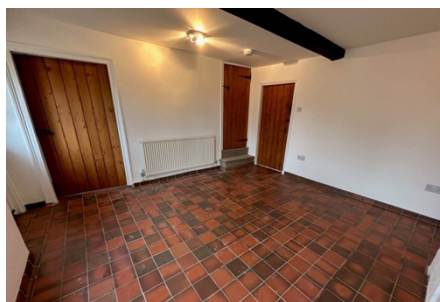
T: 01454 417336
w: www.milburys.co.uk



Floorplan



Additional Photos



Important Notice

Milburys Estate Agents Ltd, their clients and any joint agents give notice that they have not tested any apparatus, equipment, fixtures, fittings, heating systems, drains or services and so cannot verify they are in working order or fit for their purpose. Interested parties are advised to obtain verification from their surveyor or relevant contractor. Statements pertaining to tenure are also given in good faith and should be verified by your legal representative. Digital images may, on occasion, include the use of a wide-angle lens. Please ask if you have any queries about any of the images shown, prior to viewing. Where provided, floor plans are shown purely as an indication of layout. They are not scale drawings and should not be treated as such. Complete listings and full details of all our properties (both for sale and to let) are available at www.milburys.co.uk