

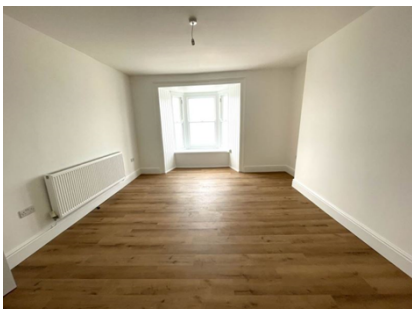
MSPROPERTIES

ESTATE AGENCY

15 Marine Terrace , Aberystwyth, SY23 2AZ

£800 Monthly

TO LET / I'W OSOD



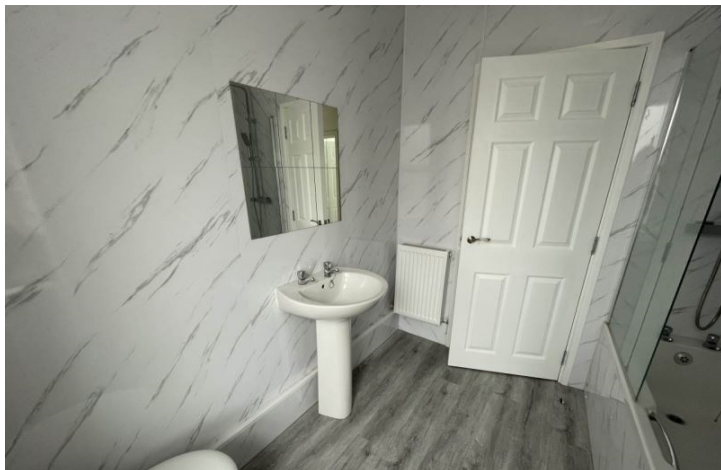
Property Features:

- Furnished

Description

A recently renovated 1 bedroom flat located on Marine Terrace, Aberystwyth. This fantastic property offers a large open plan living area/kitchen, a modern shower room and a good sized bedroom. The property benefits from amazing views over Aberystwyth Promenade

ONLY £800 - AVAILABLE 1ST OF APRIL 2026



EPC Certificate

Energy Efficiency Rating			Environmental Impact (CO ₂) Rating		
	Current	Potential		Current	Potential
Very energy efficient - lower running costs			Very environmentally friendly - lower CO ₂ emissions		
A			A		
(92-)			(92-)		
B			B		
(81-91)			(81-91)		
C			C		
(69-80)			(69-80)		
D			D		
(55-68)			(55-68)		
E			E		
(39-54)			(39-54)		
F			F		
(21-38)			(21-38)		
G			G		
(1-20)			(1-20)		
Not energy efficient - higher running costs			Not environmentally friendly - higher CO ₂ emissions		
England & Wales	EU Directive 2002/91/EC		England & Wales	EU Directive 2002/91/EC	