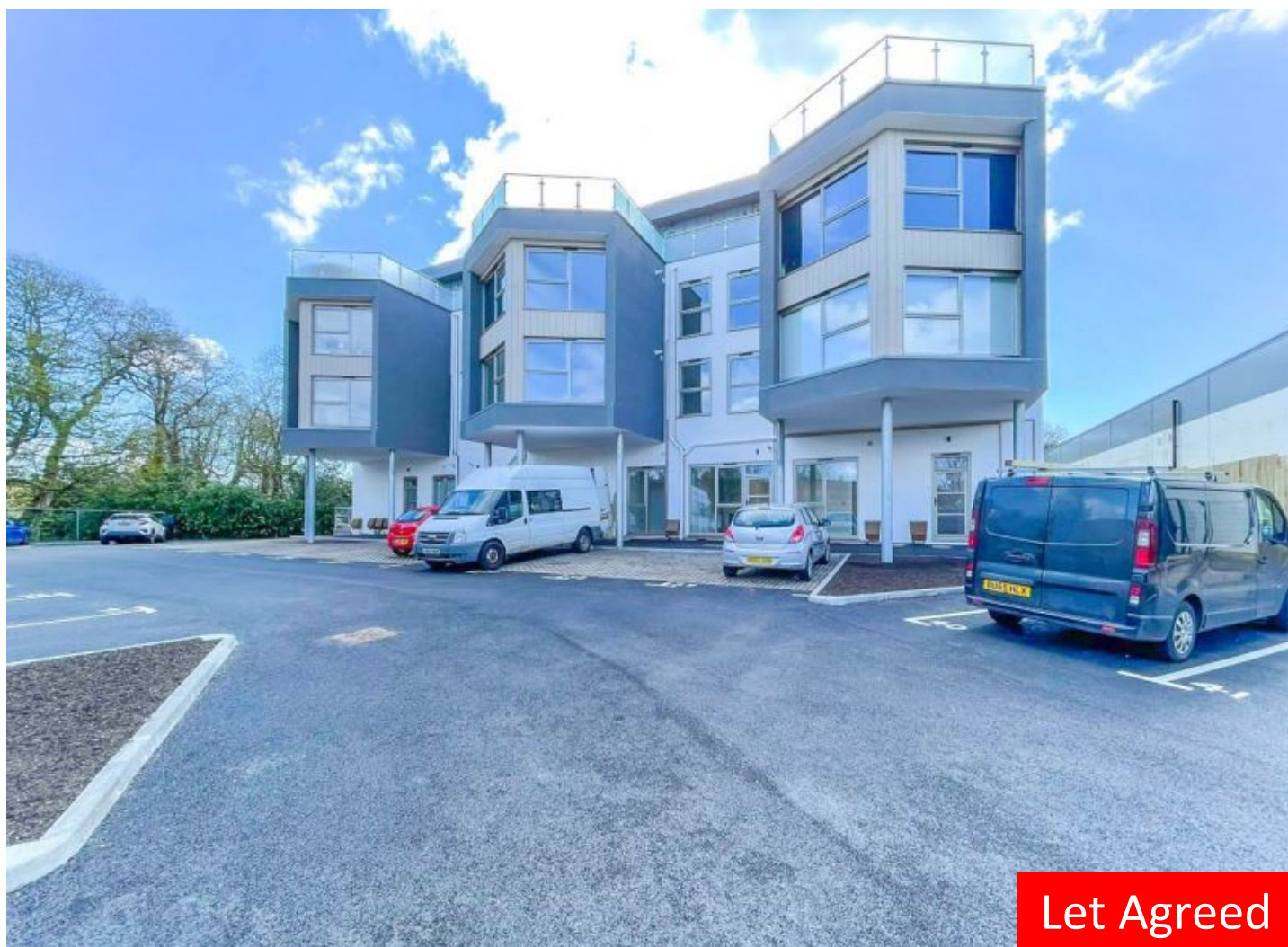


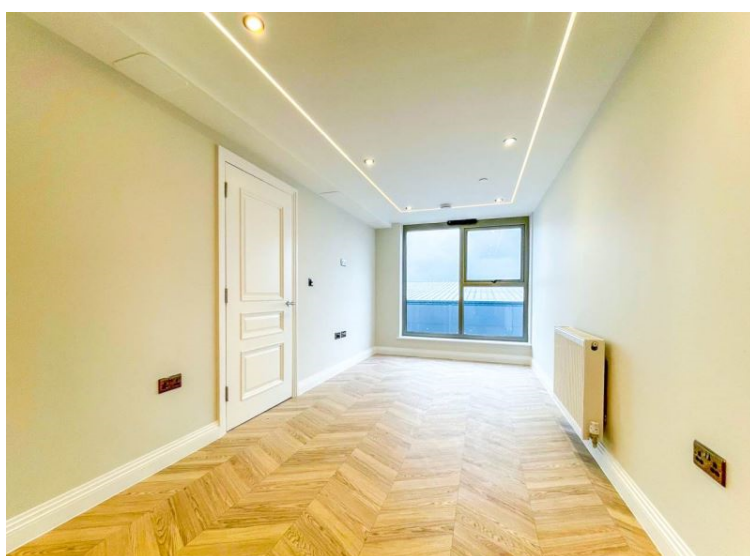
Bowmont Place , Somerford Road,
Christchurch, Dorset, BH23 3FN

Available 26 July 2024

£995 PCM



- £1148.07 Deposit
- 1 Bedroom Flat / Apartment
- EPC Rating: B
- Unfurnished
- 1 BED
- Council Tax Band B
- Double Bed



EST
1992

THE PROPERTY PROFESSIONALS
Slades Lettings Agent

Slades

Property Description

LUXURY HIGH SPEC 1 DOUBLE BEDROOM SECOND FLOOR APARTMENT WITHIN A SECURE GATED DEVELOPMENT.....Slades are delighted to offer for rent a high spec 1 double bedroom second floor apartment within a secure gated development, located within a short walk to Mudford Quay and just a stones throw away from the local amenities such as Aldi and Costa. The property benefits from gas central heating, double glazing, A LIFT IN THE BLOCK, good size lounge / dining area with a modern fitted kitchen including an integrated washing machine, dishwasher and a fridge freezer. Further benefiting from a double bedroom including a built in wardrobe, ultra modern bathroom suite with a shower cubicle only, off road parking for one car and let on an unfurnished basis. AVAILABLE FROM THE END OF JULY VIEW NOW TO AVOID

Room Sizes

[[Rooms.Name]] - [[Rooms.Dimensions]]



EPC Rating

Energy Efficiency Rating		Environmental Impact (CO ₂) Rating	
Current	Potential	Current	Potential
Very energy efficient - lower running costs		Very environmentally friendly - lower CO ₂ emissions	
(92-100) A		(92-100) A	
(81-91) B		(81-91) B	
(69-80) C		(69-80) C	
(55-68) D		(55-68) D	
(39-54) E		(39-54) E	
(21-38) F		(21-38) F	
(1-20) G		(1-20) G	
Not energy efficient - higher running costs		Not environmentally friendly - higher CO ₂ emissions	
England & Wales	EU Directive 2002/91/EC	England & Wales	EU Directive 2002/91/EC

