

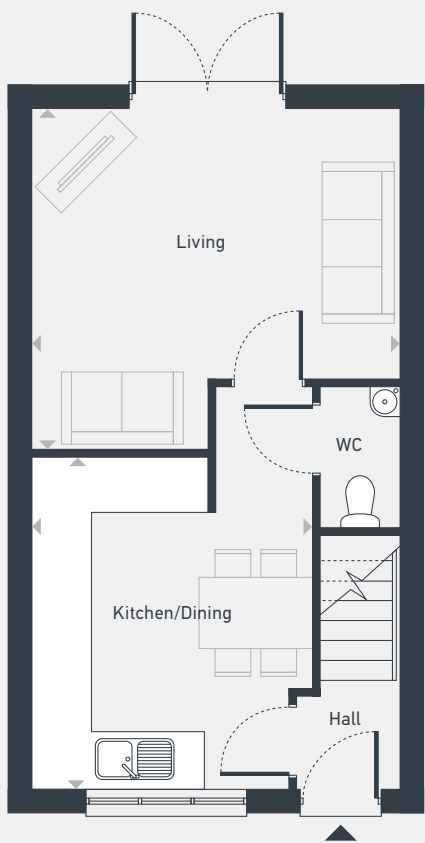


Marble Square

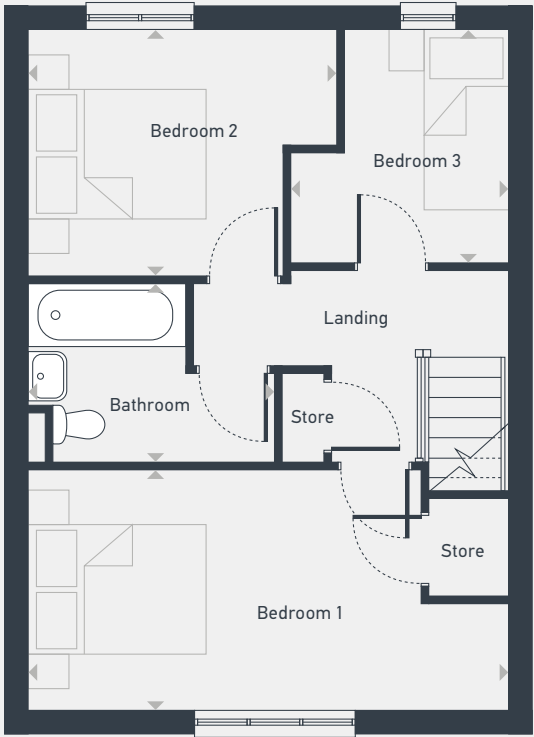
The Laurel 3 bedroom house

Plots as drawn: 17 and 24
Plots handed: 25

69.86 sq.m / 752 sq.ft



GROUND FLOOR



FIRST FLOOR

ST: Storage WC: Water Closet

DIMENSIONS	m	ft
Living	3.99m x 3.72m	13'1" x 12'2"
Kitchen/Dining	3.63m x 3.03m	11'11" x 9'11"

DIMENSIONS	m	ft
Bedroom 1	5.25m x 2.64m	17'3" x 8'8"
Bedroom 2	3.37m x 2.64m	11'1" x 8'8"
Bedroom 3	2.49m x 2.39m	8'2" x 7'10"
Bathroom	2.68m x 1.97m	8'9" x 6'6"



0115 671 0397 | sales@thesohub.co.uk | placesforpeople.co.uk/marble-square
Marble Square, Nightingale Road, Osmaston, Derby DE24 8BF

Please note: All CGIs, layouts and floor plans, configurations, maps and information are intended for guidance only and accuracy of this information cannot be relied upon by prospective purchasers who must make their own enquiries to satisfy themselves by inspection or otherwise as to the correct detail. Sizes and dimensions approximate and subject to change.