

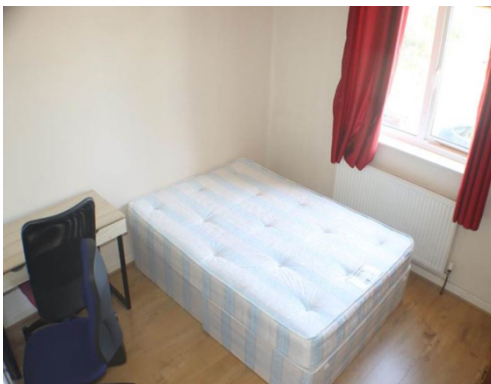


Bishops Rise, Hatfield, Hertfordshire

# Welcome to

Bishops Rise, Hatfield, Hertfordshire

£1,860 pcm



# Welcome to

[[Instruction.Address2]], [[Instruction.Address3]]

[[Instruction.Rooms.Description]]

Offers in excess of  
[[Instruction.Price]:Format(£#,###)]



### Bishops Rise, Hatfield, AL10

APPROX GROSS INTERNAL FLOOR AREA: 769 sq. ft / 72 sq. m



For identification purposes only

Please note, the marker reflects the postcode not the actual property

## Check out more properties at strats.co.uk

This is a leasehold property. We are awaiting further details about the Terms of the lease. For further information please contact the branch. Please note additional fees could be incurred for items such as Leasehold packs.

1.MONEY LAUNDERING REGULATIONS Intending purchasers will be asked to produce identification documentation at a later stage and we would ask for your co-operation in order that there is no delay in agreeing sale. 2.These particulars do not constitute part or all of an offer or contract. 3.The measurements indicated are supplied for guidance only and as such must be considered incorrect. Potential buyers are advised to recheck measurements before committing to any expense. 4.We have not tested any apparatus, equipment, fixtures or services and it is in the buyers interest to check working condition of any appliances. 5.Where an EPC, or Home Report (Scotland only) is held for this property, it is available for inspection at the branch by appointment. If you require a printed version of a Home Report, you will need to pay a reasonable production charge reflecting printing and other costs. 6.We are not able to offer an opinion either written or verbal on the content of these reports and this must be obtained from your legal representative. 7.Whilst we take care in preparing these reports, a buyer should ensure that his/her legal representative confirms as soon as possible all matters relating to title including the extent and boundaries of the property and other important matters before exchange of contract.



Tel: 01707 262737  
www.strats-estates.co.uk  
11 Harpsfield Broadway, Hatfield, Herts AL10 9TF  
University of Hertfordshire, Ele House, First Floor, Room 1B537, College Lane, Hatfield, Herts AL10 9AB

## Environmental Impact (CO<sub>2</sub>) Rating

	Current	Potent
<i>Very environmentally friendly - lower CO<sub>2</sub> emissions</i>		
(92+ <b>A</b> )		
(81-91) <b>B</b>		
(69-80) <b>C</b>		
(55-68) <b>D</b>		
(39-54) <b>E</b>		
(21-38) <b>F</b>		





