

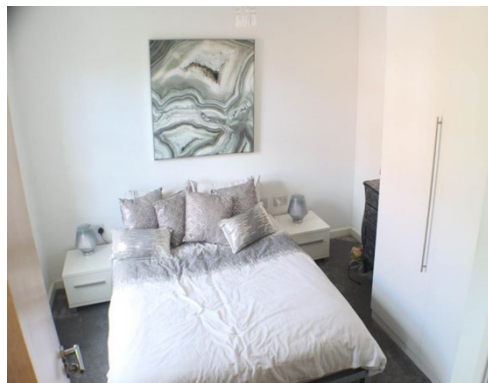
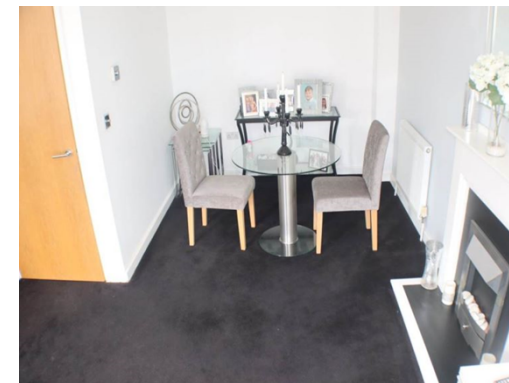


Elsons Mews, Welwyn Garden City, Hertfordshire

Welcome to

Elsons Mews, Welwyn Garden City, Hertfordshire

£2,100 pcm



Welcome to

[[Instruction.Address2]], [[Instruction.Address3]]

[[Instruction.Rooms.Description]]

Offers in excess of
[[Instruction.Price]:Format(£#,###)]

Please note, the marker reflects the postcode not the actual property

Check out more properties at strats.co.uk

This is a leasehold property. We are awaiting further details about the Terms of the lease. For further information please contact the branch.
Please note additional fees could be incurred for items such as Leasehold packs.

1.MONEY LAUNDERING REGULATIONS Intending purchasers will be asked to produce identification documentation at a later stage and we would ask for your co-operation in order that there is no delay in agreeing sale. 2.These particulars do no constitute part or all of an offer or contract. 3.The measurements indicated are supplied for guidance only and as such must be considered incorrect. Potential buyers are advised to recheck measurements before committing to any expense. 4.We have not tested any apparatus, equipment, fixtures or services and it is in the buyers interest to check working condition of any appliances. 5.Where an EPC, or Home Report (Scotland only) is held for this property, it is available for inspection at the branch by appointment. If you require a printed version of a Home Report, you will need to pay a reasonable production charge reflecting printing and other costs. 6.We are not able to offer an opinion either written or verbal on the context of these reports and this must be obtained from your legal representative. 7.Whilst we take care in preparing these reports, a buyer should ensure that his/her legal representative confirms as soon as possible all matters relating to title including the extent and boundaries of the property and other important matters before echange of contract.



Tel: 01707 262737

www.strats-estates.co.uk

11 Harpsfield Broadway, Hatfield, Herts AL10 9TF

University of Hertfordshire, Ele House, First Floor, Room 1B537, College Lane, Hatfield, Herts AL10 9AB

Environmental Impact (CO ₂) Rating		
	Current	Potent
<i>Very environmentally friendly - lower CO₂ emissions</i>		
(92+)	A	
(81-91)	B	
(69-80)	C	
(55-68)	D	
(39-54)	E	
(21-38)	F	

