



## 4B Merchant Square, London, W2, W2 1AP

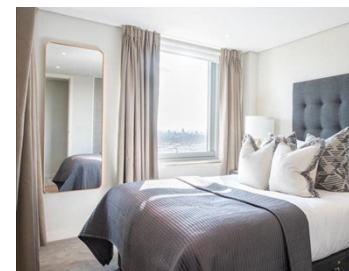
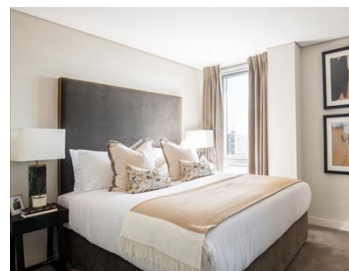
- £2,650 Weekly
- Available Now
- Furnished
- Four double bedrooms
- Three bathrooms
- Large roof terrace
- Impressive views
- 15th floor with lift
- Over 2500 sq ft
- Concierge

Penthouse apartment with large private roof terrace and fantastic south facing views across London. Located on the 15th floor of this popular modern development with concierge and underground parking, there is approximately 1580 sq ft of lateral internal accommodation with four double bedrooms, three bathrooms and lift access.

Flexible terms available and the added benefit of a professional on-site management team.

# TYERS • YAN

## MANAGEMENT



TYERS • YAN

Tyers Yan Management Limited

Berkeley Square House, Berkeley Square, Mayfair, London, W1J 6BD

Company No. 121 074 19

# TYERS • YAN

## MANAGEMENT



Energy Efficiency Rating		
	Current	Potential
Very energy efficient - lower running costs		
(92- A		
(81-91) B		
(69-80) C		
(55-68) D		
(39-54) E		
(21-38) F		
(1-20) G		
Not energy efficient - higher running costs		
England & Wales	EU Directive 2002/91/EC	

The graph shows this property's current and potential energy efficiency.

Properties are given a rating from A (most efficient) to G (least efficient).

Properties are also given a score. The higher number the lower your fuel bills are likely to be.

For properties in England and Wales:

the average energy rating is D  
 the average energy score is 60