



Marshall Street, London, W1F, W1F 7BE

- £1,440 Weekly
- Available 09 July 2026
- Furnished
- Two double bedrooms
- Two bathrooms
- 24 hour concierge
- Quiet central location
- Top floor with lift
- South facing terrace
- Duplex apartment

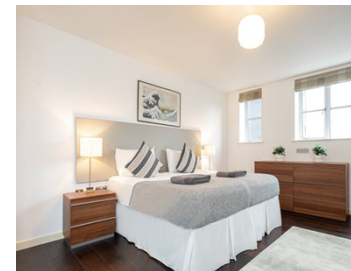
Well presented and spacious duplex apartment offering over 1600 sq ft of internal accommodation and comprising of two generous double bedrooms and two bathrooms, with 24 hour concierge, terrace and lift access.

The apartment is well apportioned with both bedrooms being extremely spacious and good wardrobe space, as well as an en-suite in the main bedroom and separate family bathroom. There is an excellent flow of natural light with windows on each side and a south facing terrace running alongside the reception room. Further benefit of air conditioning throughout.

Fantastic central location in the heart of Soho, while being offset from the street

TYERS • YAN

MANAGEMENT



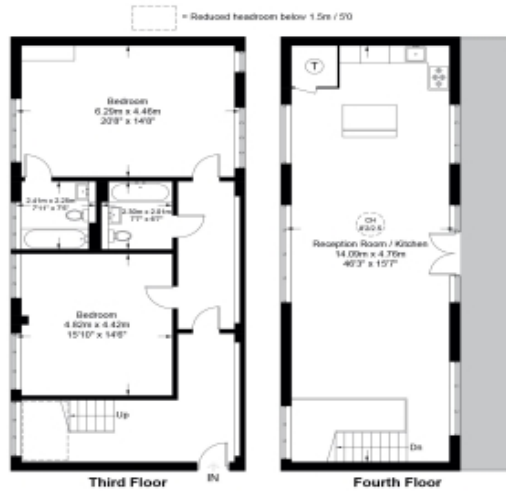
TYERS • YAN

TYERS • YAN MANAGEMENT

Marshall Street, W1F

Approximate Gross Internal Area = 1603 sq ft / 148.9 sq m

Restricted Height = 29 sq ft / 2.7 sq m



TYERS • YAN
MANAGEMENT

This plan is for layout guidance only and is not drawn to scale unless stated. All dimensions, including windows, doors, and the Total Gross Internal Area (GIA), are approximate. For precise measurements, please consult a qualified architect or surveyor before making any decisions based on this plan.



Energy Efficiency Rating		
	Current	Potential
Very energy efficient - lower running costs		
(92-) A		
(81-91) B	81	82
(69-80) C		
(55-68) D		
(39-54) E		
(21-38) F		
(1-20) G		
Not energy efficient - higher running costs		
England & Wales	EU Directive 2002/91/EC	

The graph shows this property's current and potential energy efficiency.

Properties are given a rating from A (most efficient) to G (least efficient).

Properties are also given a score. The higher number the lower your fuel bills are likely to be.

For properties in England and Wales:

the average energy rating is D
the average energy score is 60