



Huntley Street, London, WC1E, WC1E 6DD

- £600 Weekly
- Available 28 February 2026
- Furnished
- Studio apartment
- High ceilings
- Refurbished
- Quiet central location
- Separate kitchen
- Approx. 365 sq ft
- Moments from transport links

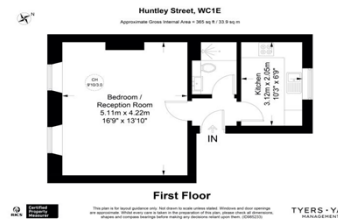
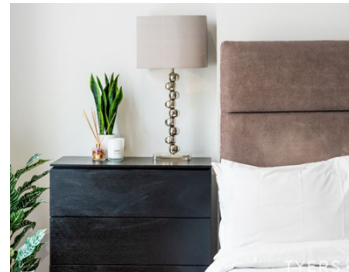
Refurbished studio apartment with high ceilings and in a quiet central location and forming part of this sensitively restored Grade II listed building with just two other apartments.

Located on the 1st floor, the apartment has approximately 365 sq ft of internal accommodation, with a separate fitted kitchen including an integrated fridge/freezer, dishwasher and washing machine.

This small, well maintained building is conveniently located just moments away from the cafes and restaurants along Tottenham Court Road and transport links including Euston, Warren Street and Goodge Street stations.

TYERS • YAN

MANAGEMENT



TYERS • YAN

Tyers Yan Management Limited

Berkeley Square House, Berkeley Square, Mayfair, London, W1J 6BD

Company No. 121 074 19

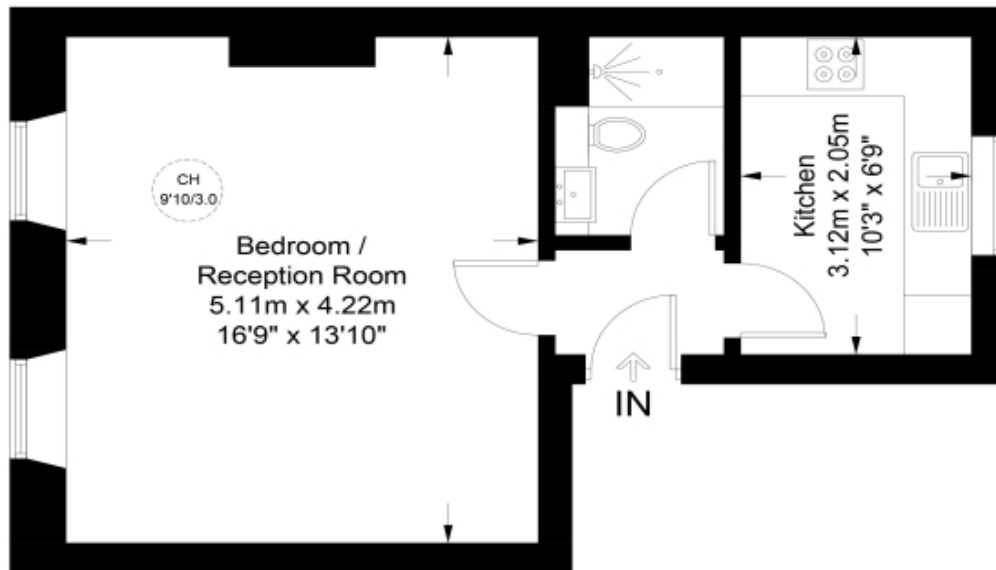
TYERS • YAN

MANAGEMENT



Huntley Street, WC1E

Approximate Gross Internal Area = 365 sq ft / 33.9 sq m




First Floor



**Certified
Property
Measurer**

This plan is for layout guidance only. Not drawn to scale unless stated. Windows and door openings are approximate. Whilst every care is taken in the preparation of this plan, please check all dimensions, shapes and compass bearings before making any decisions reliant upon them. (ID885233)

TYERS • YAN
MANAGEMENT

Energy Efficiency Rating		
	Current	Potential
Very energy efficient - lower running costs		
(92- A		
(81-91) B		
(69-80) C	71	77
(55-68) D		
(39-54) E		
(21-38) F		
(1-20) G		
Not energy efficient - higher running costs		
England & Wales	EU Directive 2002/91/EC 	

The graph shows this property's current and potential energy efficiency.

Properties are given a rating from A (most efficient) to G (least efficient).

Properties are also given a score. The higher number the lower your fuel bills are likely to be.

For properties in England and Wales:

the average energy rating is D
the average energy score is 60

TYERS • YAN