



## Strathmore Court, Park Road, London, NW8, NW8 7HY

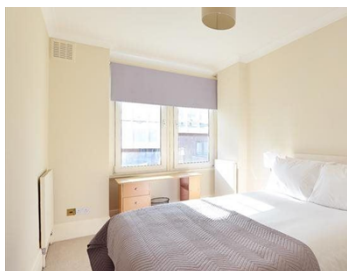
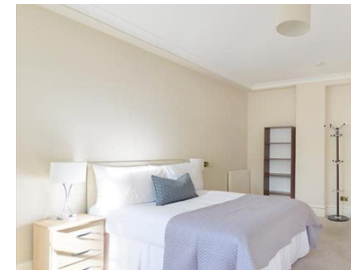
- £2,195 Weekly
- Available Now
- Furnished
- Five double bedrooms
- Five en-suite bathrooms
- Guest WC
- Approx. 2500 sq ft
- 5th floor with lift
- Pets considered subject to offer
- Opposite Regents Park

Extremely spacious five double bedroom lateral apartment, with five en-suite bathrooms and an additional guest WC and ample storage throughout. The apartment offers over 2500 sq ft of internal accommodation and is conveniently located opposite Regents Park in this prestigious Art Deco Mansion block, on the 5th floor with lift access.

There is a dedicated on-site or building manager who is on hand to assist with any property-related issues as well as a dedicated management team of maintenance experts with a 24-hour emergency helpline.

# TYERS • YAN

## MANAGEMENT



TYERS • YAN

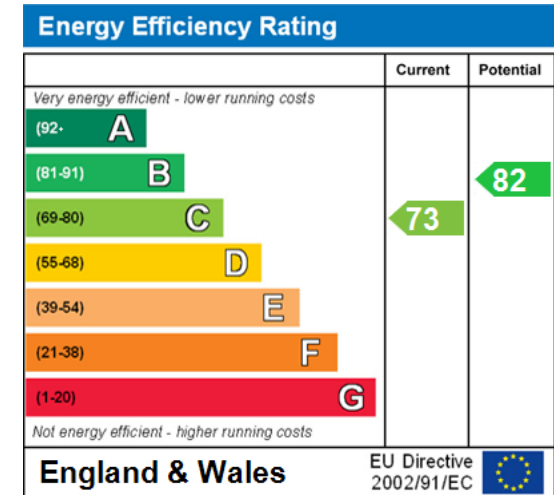
Tyers Yan Management Limited

Berkeley Square House, Berkeley Square, Mayfair, London, W1J 6BD

Company No. 121 074 19

# TYERS • YAN

## MANAGEMENT



The graph shows this property's current and potential energy efficiency.

Properties are given a rating from A (most efficient) to G (least efficient).

Properties are also given a score. The higher number the lower your fuel bills are likely to be.

For properties in England and Wales:

the average energy rating is D  
the average energy score is 60