



Huntley Street, London, WC1E, WC1E 6DD

- £665 Weekly
- Available 08 July 2026
- Furnished
- Studio apartment
- Refurbished to a high standard
- High ceilings
- Separate kitchen
- Quiet central location
- 1st floor
- Excellent transport links

Refurbished studio apartment with high ceilings and in a quiet central location and forming part of this sensitively restored Grade II listed building with just two other apartments.

Located on the 1st floor, the apartment has approximately 365 sq ft of internal accommodation, with a separate fitted kitchen including an integrated fridge/freezer, dishwasher and washing machine.

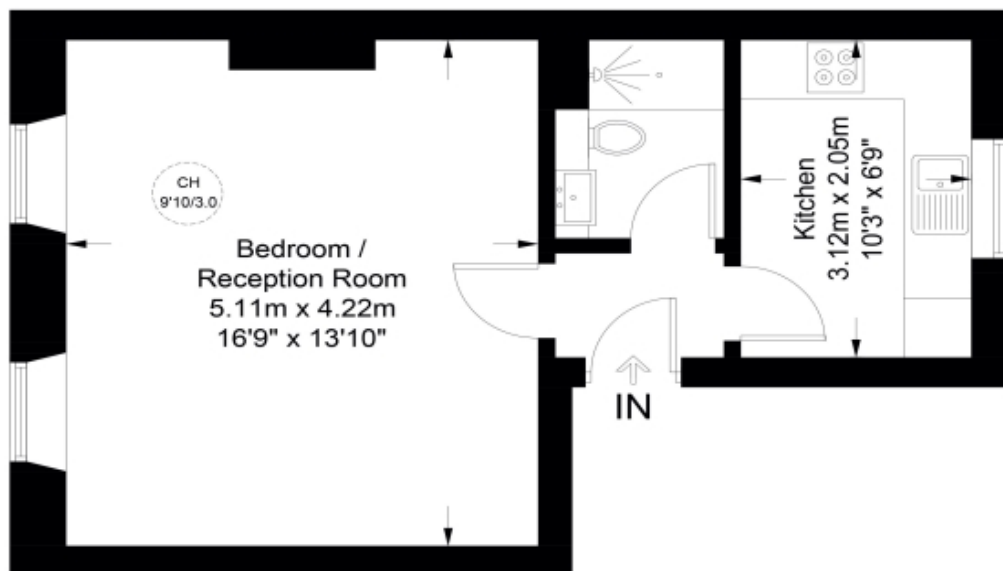
This small, well maintained building is conveniently located just moments away from the cafes and restaurants along Tottenham Court Road and transport links including Euston, Warren Street and Godege Street stations.

TYERS • YAN MANAGEMENT



Huntley Street, WC1E

Approximate Gross Internal Area = 365 sq ft / 33.9 sq m



First Floor



This plan is for layout guidance only. Not drawn to scale unless stated. Windows and door openings are approximate. Whilst every care is taken in the preparation of this plan, please check all dimensions, shapes and compass bearings before making any decisions reliant upon them. (ID985233)

**TYERS • YAN
MANAGEMENT**

Energy Efficiency Rating		
	Current	Potential
<i>Very energy efficient - lower running costs</i>		
92- A		
(81-91) B		
(69-80) C	71	77
(55-68) D		
(39-54) E		
(21-38) F		
(1-20) G		
<i>Not energy efficient - higher running costs</i>		
England & Wales	EU Directive 2002/91/EC	

The graph shows this property's current and potential energy efficiency.

Properties are given a rating from A (most efficient) to G (least efficient).

Properties are also given a score. The higher number the lower your fuel bills are likely to be.

For properties in England and Wales:

the average energy rating is D
the average energy score is 60