



## 4B Merchant Square, London, W2, W2 1AP

- £1,695 Weekly
- Available Now
- Furnished
- Three double bedrooms
- Two bathrooms
- Approx. 980 sq ft
- 9th floor with lift
- Concierge
- Underground parking available

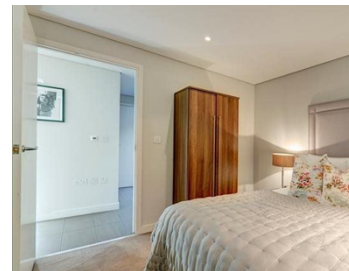
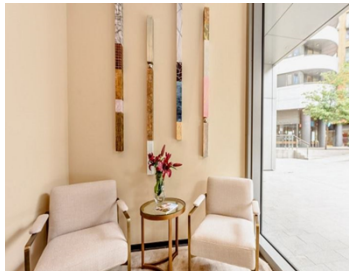
Well maintained three double bedroom apartment with professional on-site management team. Located on the 9th floor (with lift access) of this popular modern development with concierge, there is the further benefit of secure underground parking which is available by negotiation.

The apartment comprises three bedrooms, with an en-suite in the main bedroom, a separate family bathroom and an open-plan kitchen / reception room with a south facing view over the Grand Union Canal.

Extremely well located for easy access to excellent transport links, including the Heathrow Express for international travel, Hyde Park and the amenities in central

# TYERS • YAN

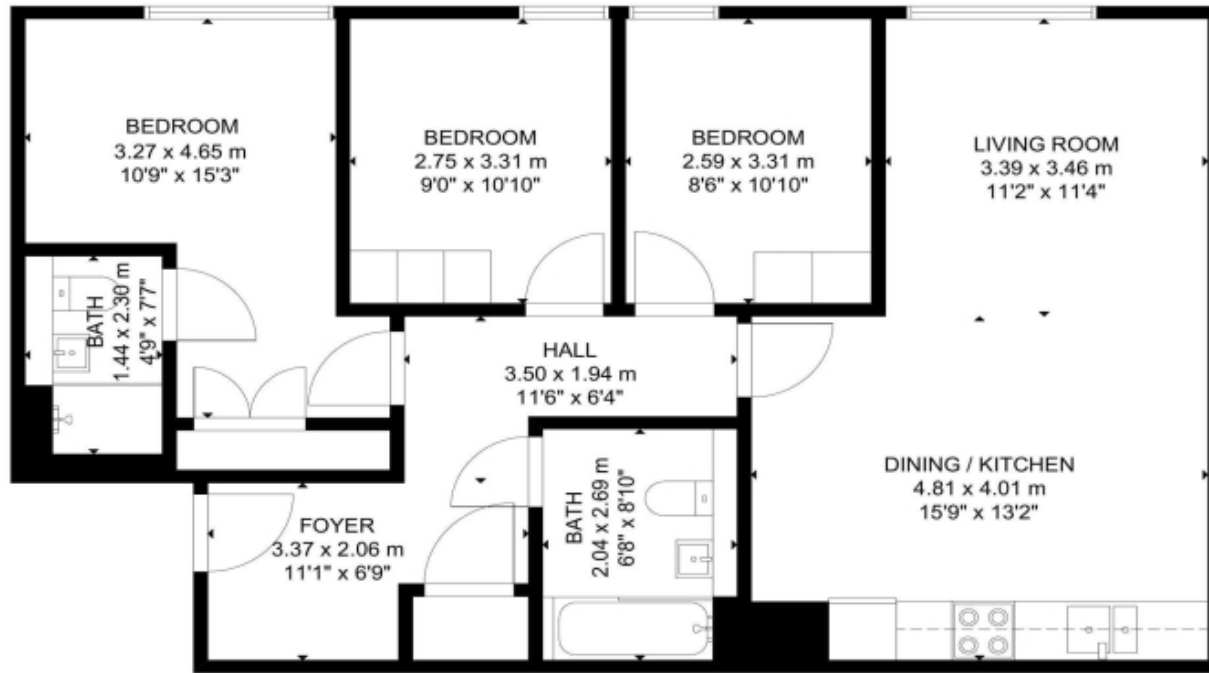
MANAGEMENT




## TYERS • YAN

# TYERS • YAN

## MANAGEMENT



GROSS INTERNAL AREA  
TOTAL: 88 m<sup>2</sup>/952 sq ft  
SIZE AND DIMENSIONS ARE APPROXIMATE, ACTUAL MAY VARY.

Energy Efficiency Rating		
	Current	Potential
Very energy efficient - lower running costs		
(92- A		
(81-91) B	85	85
(69-80) C		
(55-68) D		
(39-54) E		
(21-38) F		
(1-20) G		
Not energy efficient - higher running costs		
<b>England &amp; Wales</b>	EU Directive 2002/91/EC 	

The graph shows this property's current and potential energy efficiency.

Properties are given a rating from A (most efficient) to G (least efficient).

Properties are also given a score. The higher number the lower your fuel bills are likely to be.

For properties in England and Wales:

the average energy rating is D  
the average energy score is 60