



Huntley Street, London, WC1E, WC1E 6DD

- £1,075 Weekly
- Available 05 August 2026
- Furnished
-

This two double-bedroom duplex apartment is split over the second and third floors of a well maintained Grade II building, with only three apartments.

Comprising approximately 886 sq ft, the apartment is tastefully furnished with a separate fully fitted kitchen including dishwasher, as well as a bright and spacious reception room with dining area and a wall mounted TV provided. The main bedroom has a king size bed with en-suite bathroom and sufficient space for desk if required, and the second bedroom is a comfortable double also allowing room for a small desk. There is an additional separate bathroom with a shower.

This desirable location is a quiet street in close proximity to Goodge Street, Warren

TYERS • YAN

MANAGEMENT



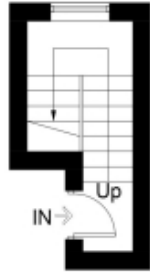
TYERS • YAN

TYERS • YAN MANAGEMENT

Huntley Street ,WC1E

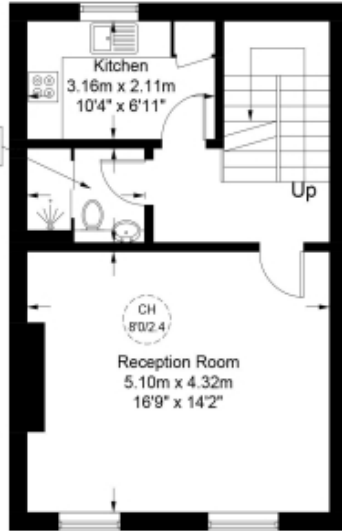
Approximate Gross Internal Area = 886 sq ft / 82.3 sq m

Restricted Height = 35 sq ft / 3.3 sq m



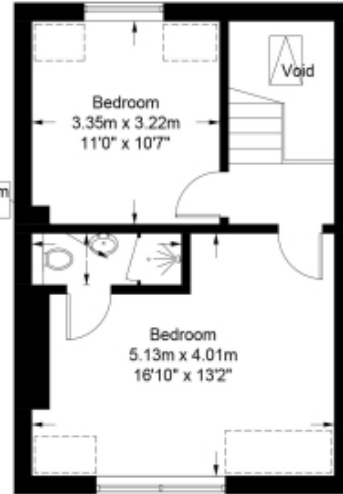
2.01m x 1.53m
6'7" x 5'0"

First Floor



Second Floor

2.53m x 0.87m
8'4" x 2'10"



Third Floor

Energy Efficiency Rating		
	Current	Potential
Very energy efficient - lower running costs		
(92- A		
(81-91) B		81
(69-80) C	74	
(55-68) D		
(39-54) E		
(21-38) F		
(1-20) G		
Not energy efficient - higher running costs		
England & Wales	EU Directive 2002/91/EC	

The graph shows this property's current and potential energy efficiency.

Properties are given a rating from A (most efficient) to G (least efficient).

Properties are also given a score. The higher number the lower your fuel bills are likely to be.

For properties in England and Wales:

the average energy rating is D
the average energy score is 60

TYERS • YAN
MANAGEMENT

This plan is for layout guidance only and is not drawn to scale unless stated. All dimensions, including windows, doors, and the Total Gross Internal Area (GIA), are approximate. For precise measurements, please consult a qualified architect or surveyor before making any decisions based on this plan.



TYERS • YAN