



West Cromwell Road, London, SW5, SW5 9QS

- £2,950 Monthly
- Available Now
- Furnished
- Two double bedrooms
- Two bathrooms
- Over 750 sq ft
- Refurbished
- Separate kitchen
- Moments from transport links

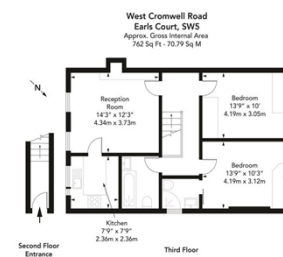
Refurbished two double bedroom apartment, with a brand new kitchen, in a popular central location and offering over 760 sq ft of internal accommodation.

This spacious and bright two double bedroom apartment is located in the popular Earl's Court district of Kensington in the Royal Borough of Kensington and Chelsea. The apartment is fully furnished with a bright living and dining area and benefitting from a separate kitchen, as well as two double bedrooms (one ensuite) and a second bathroom. Large built-in wardrobes and shelving units throughout offer plenty of storage space.

The apartment is only a short walk away from Holland Park, Hyde Park and Kensington Palace. It is a conveniently short distance to a number of supermarkets, shops,

TYERS • YAN

MANAGEMENT

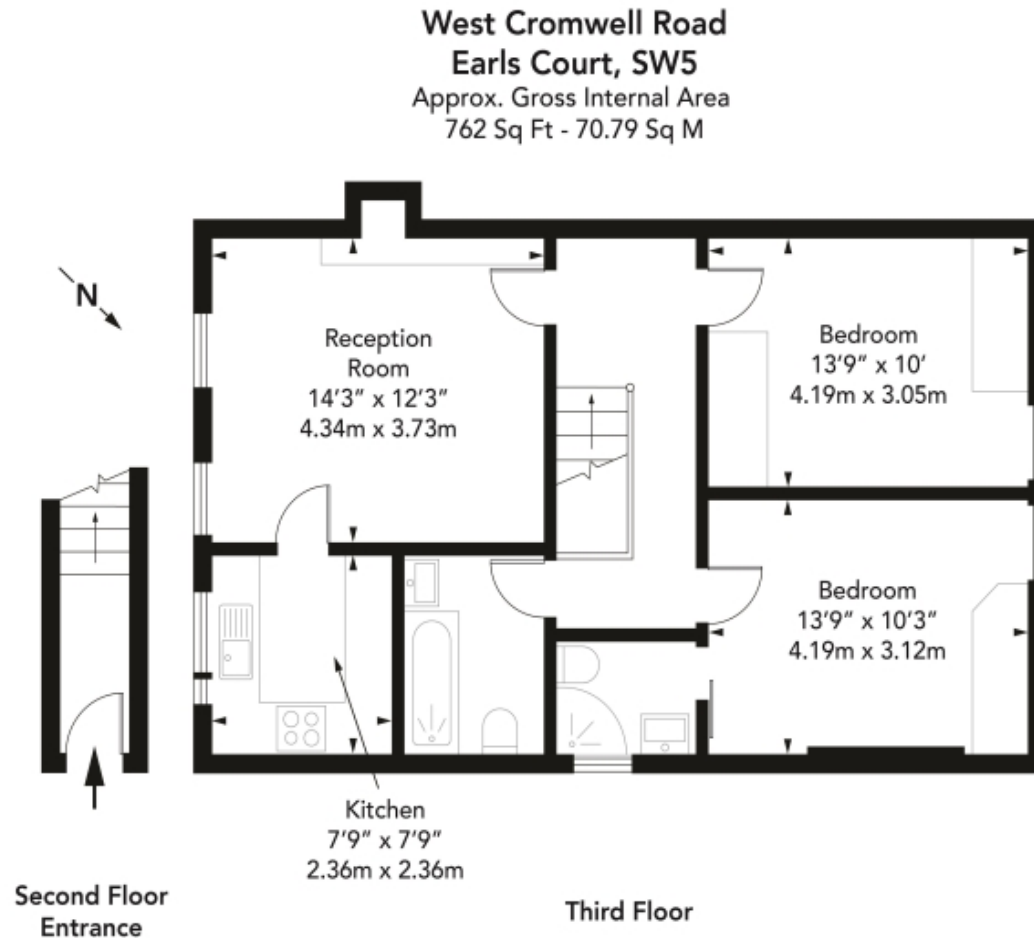



TYERS • YAN

Tyers Yan Management Limited

Berkeley Square House, Berkeley Square, Mayfair, London, W1J 6BD

Company No. 121 074 19



Energy Efficiency Rating		
	Current	Potential
Very energy efficient - lower running costs		
(92- A		
(81-91) B		79
(69-80) C		
(55-68) D	60	
(39-54) E		
(21-38) F		
(1-20) G		
Not energy efficient - higher running costs		
England & Wales	EU Directive 2002/91/EC 	

The graph shows this property's current and potential energy efficiency.

Properties are given a rating from A (most efficient) to G (least efficient).

Properties are also given a score. The higher number the lower your fuel bills are likely to be.

For properties in England and Wales:

the average energy rating is D
 the average energy score is 60