



4B Merchant Square, London, W2, W2 1AN

- £1,695 Weekly
- Available Now
- Furnished
- Three double bedrooms
- Two bathrooms
- 7th floor with lift
- Approx. 950 sq ft
- Concierge
- Underground parking available
- View over Grand Union Canal

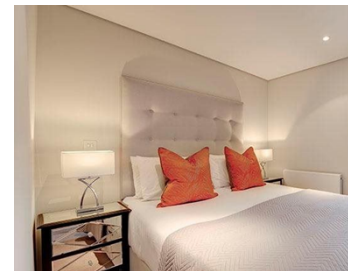
Well maintained three double bedroom apartment with professional on-site management team. Located on the 7th floor (with lift access) of this popular modern development with concierge, there is the further benefit of secure underground parking which is available by negotiation.

The apartment comprises three bedrooms, with an en-suite in the main, a separate family bathroom and an open-plan kitchen / reception room with a south facing view over the Grand Union Canal.

Extremely well located for easy access to excellent transport links, including the Heathrow Express for international travel, Hyde Park and the amenities in central

TYERS • YAN

MANAGEMENT



TYERS • YAN

Tyers Yan Management Limited


Berkeley Square House, Berkeley Square, Mayfair, London, W1J 6BD

Company No. 121 074 19

TYERS • YAN

MANAGEMENT



Energy Efficiency Rating		
	Current	Potential
Very energy efficient - lower running costs		
(92- A		
(81-91) B	85	85
(69-80) C		
(55-68) D		
(39-54) E		
(21-38) F		
(1-20) G		
Not energy efficient - higher running costs		
England & Wales	EU Directive 2002/91/EC 	

The graph shows this property's current and potential energy efficiency.

Properties are given a rating from A (most efficient) to G (least efficient).

Properties are also given a score. The higher number the lower your fuel bills are likely to be.

For properties in England and Wales:

the average energy rating is D
the average energy score is 60